

# Tom Dixon.

INDUSTRIAL LANDSCAPE

Photography Collection by

Page®



# Contents

<b>5</b>	<b>Intro</b>
<b>6</b>	<b>Smoke</b>
<b>12</b>	<b>Coal</b>
<b>16</b>	<b>Iron</b>
<b>22</b>	<b>Wash</b>
<b>26</b>	<b>Blur</b>
<b>30</b>	<b>Tide</b>
<b>34</b>	<b>Brick</b>
<b>43</b>	<b>Collection overview</b>
<b>44</b>	<b>Colour palettes</b>
<b>45</b>	<b>Recolour options</b>
<b>49</b>	<b>Terms and conditions</b>





#### **The designer**

Tom Dixon (OBE). Born in 1959. Self-taught British Designer. Founder of the design brand “Tom Dixon” and Design Research Studio that specialises in high-end concept interiors, large scale installations and architectural design. Museums across the globe have awarded and acquired some of his work, including MoMA, NYC and Centre Georges Pompidou, Paris. With a commitment to innovation and a mission to revive the British furniture industry, he’s inspired by the nation’s unique heritage to create extraordinary products for everyday use.

## **The Industrial Landscape collection**

London is the departure point for the collection – and for Tom Dixon a whole world of inspiration. Perhaps not the prettiest, nor the most glamorous, but certainly one of the most characterful cities in the world.

Gritty backdrops of railways, tunnels, of factories, workshops and warehouses. Materials so prevalent that they make a huge impact. Imperfect surfaces and materials make up the crumbling industrial landscape while the massive tidal River Thames splits the city in two, and new reflective glass towers begin to dominate the skyline.

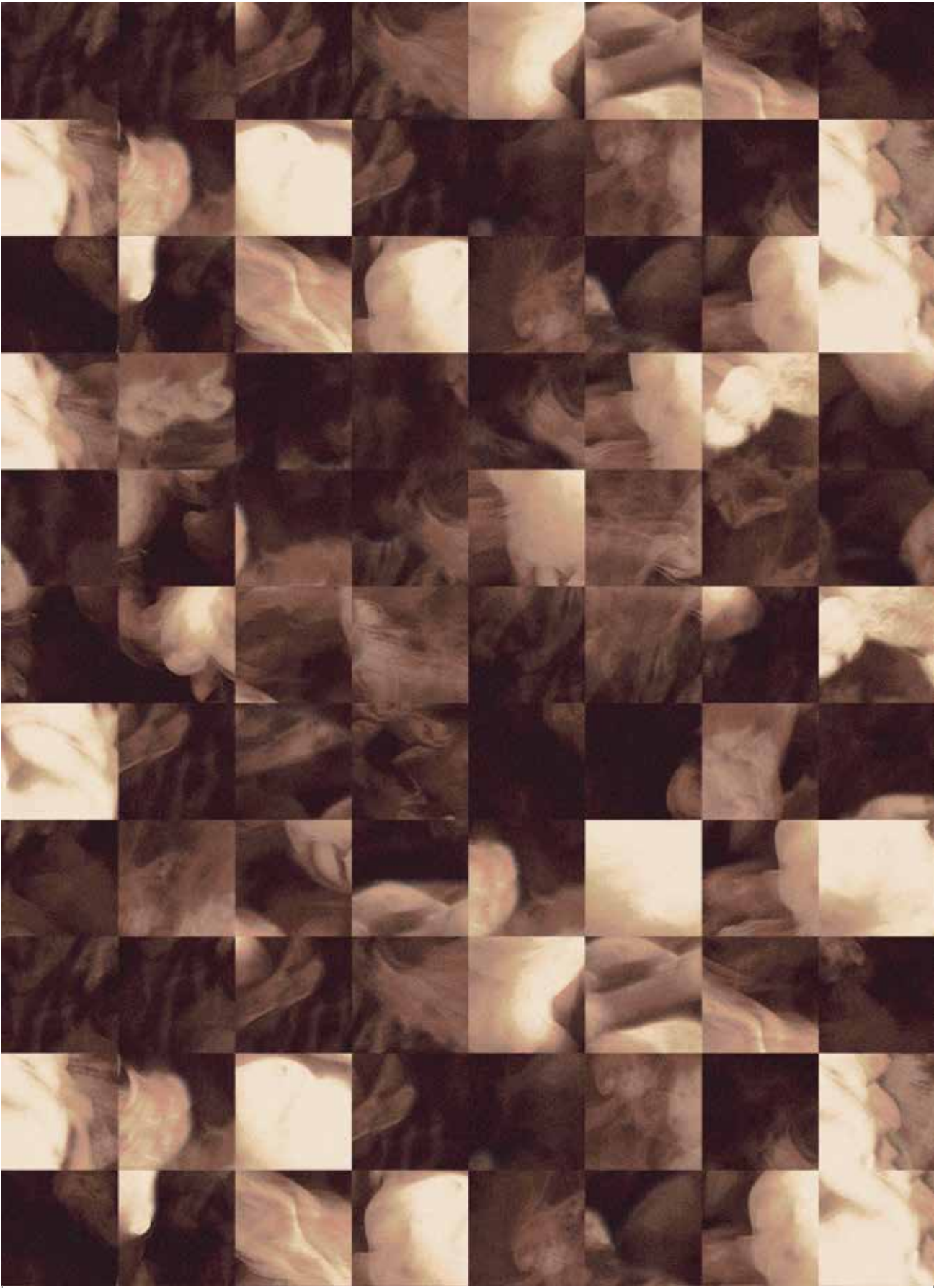
There’s a kind of beautiful pattern of time on a grimy city that has lived a few lives. As materials break, they are repaired creating a new pattern that has its own aesthetic; deconstructed bricks, patinated metal and the grey muddy water of the Thames. A series of patterns and textures that come straight from the building or the erosion process.

The Industrial Landscape collection reinterprets the rough, raw everyday surfaces of the city that are so familiar to Tom Dixon. Each of the seven designs is available as tiles, planks and broadloom and can be recoloured to meet your requirements.

# smoke

The coal-powered city with its rich industrial history, production and manufacture.



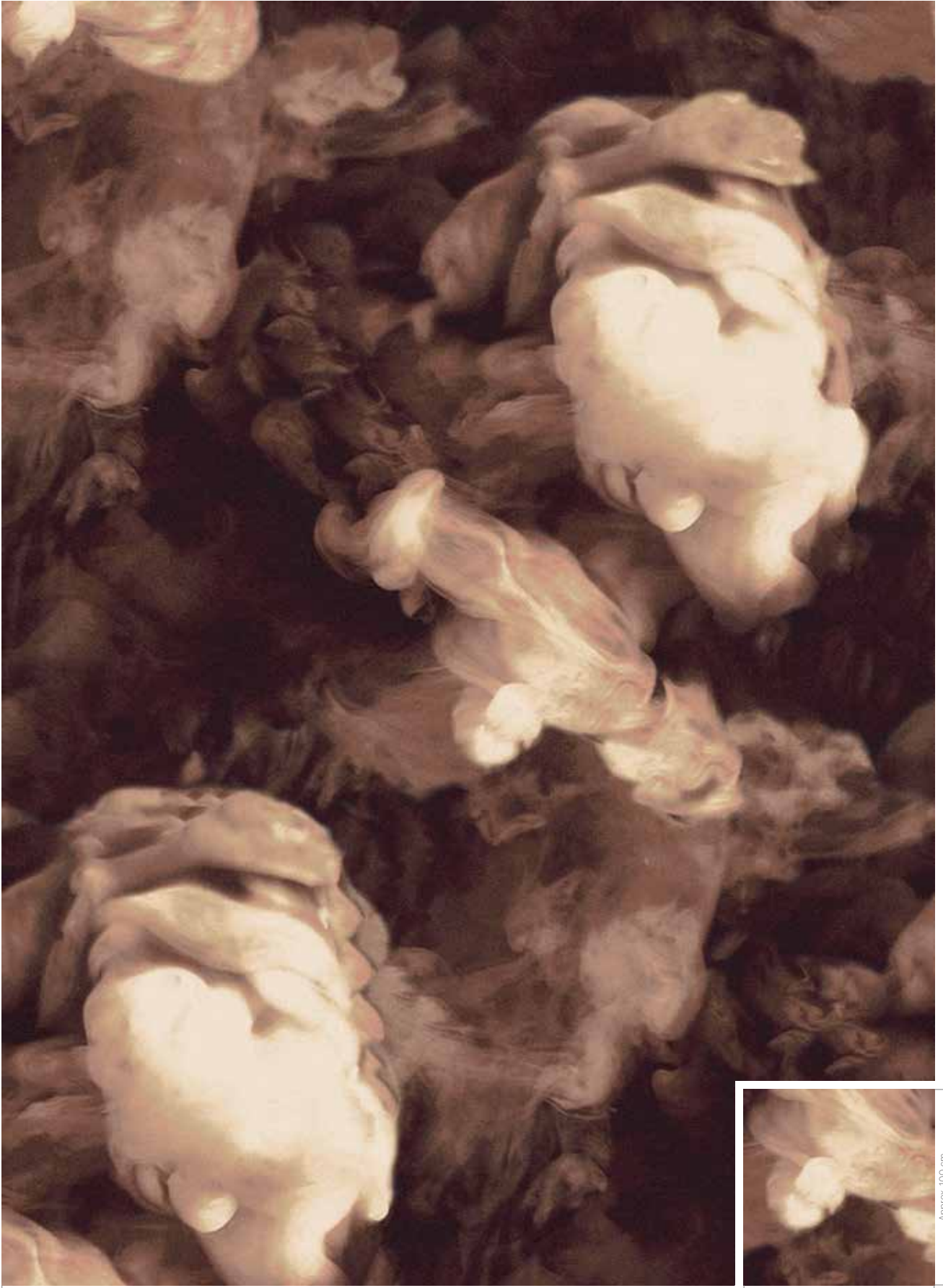


384 cm



No recolour possible





400 cm

Approx. 100 cm



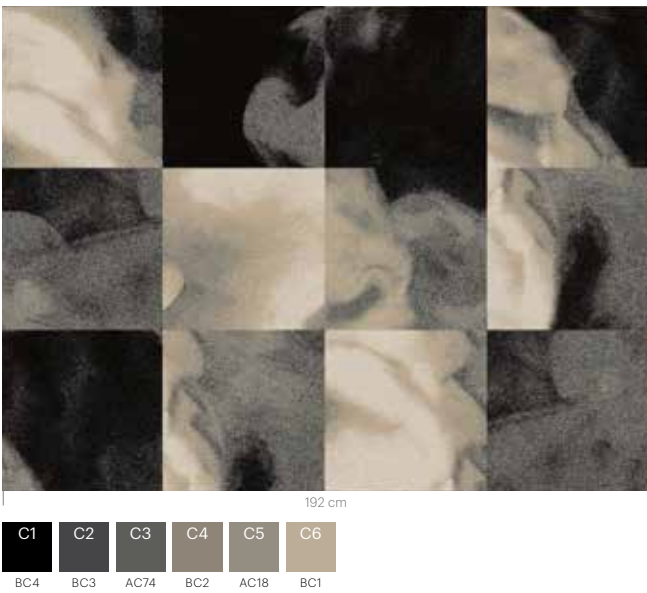
Approx. 100 cm



No recolour possible

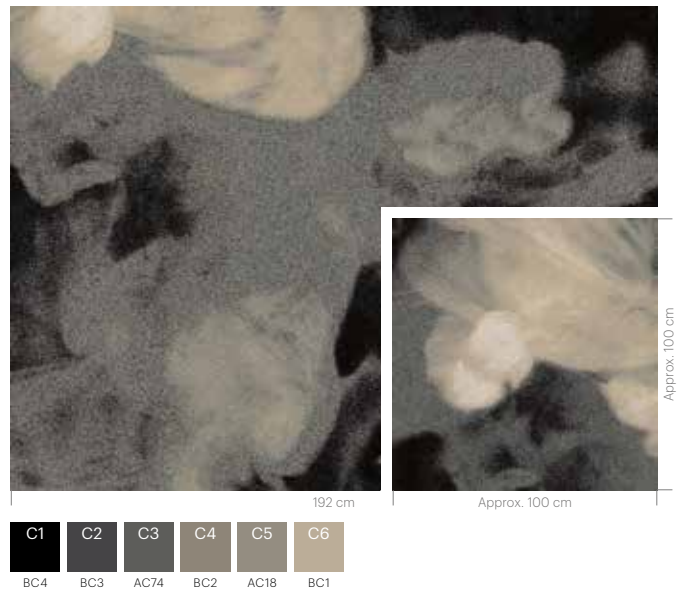
RFM55951050 SMOKE  
Installation example 4 x 3 tiles

5595



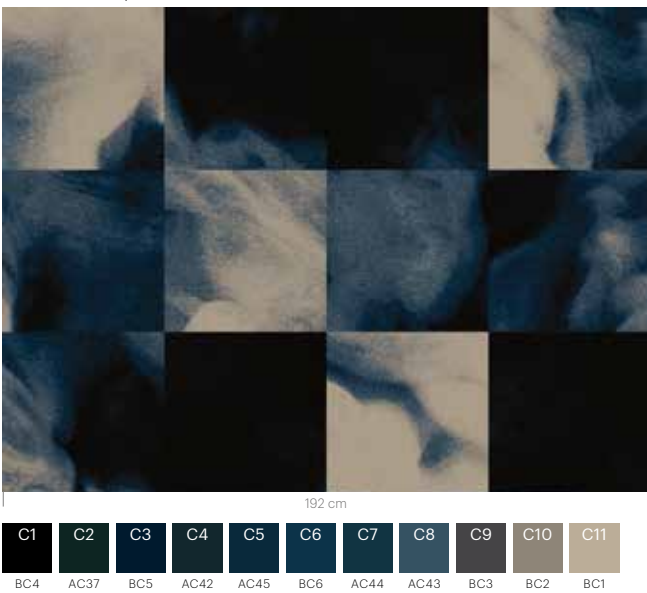
RF55951050 SMOKE  
w: 390.1 cm x l: 585.1 cm

5595



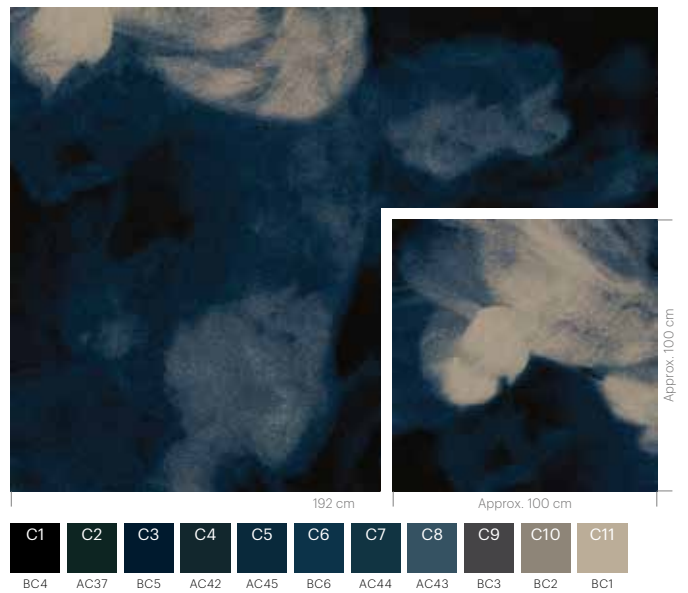
RFM55951051 SMOKE  
Installation example 4 x 3 tiles

5595

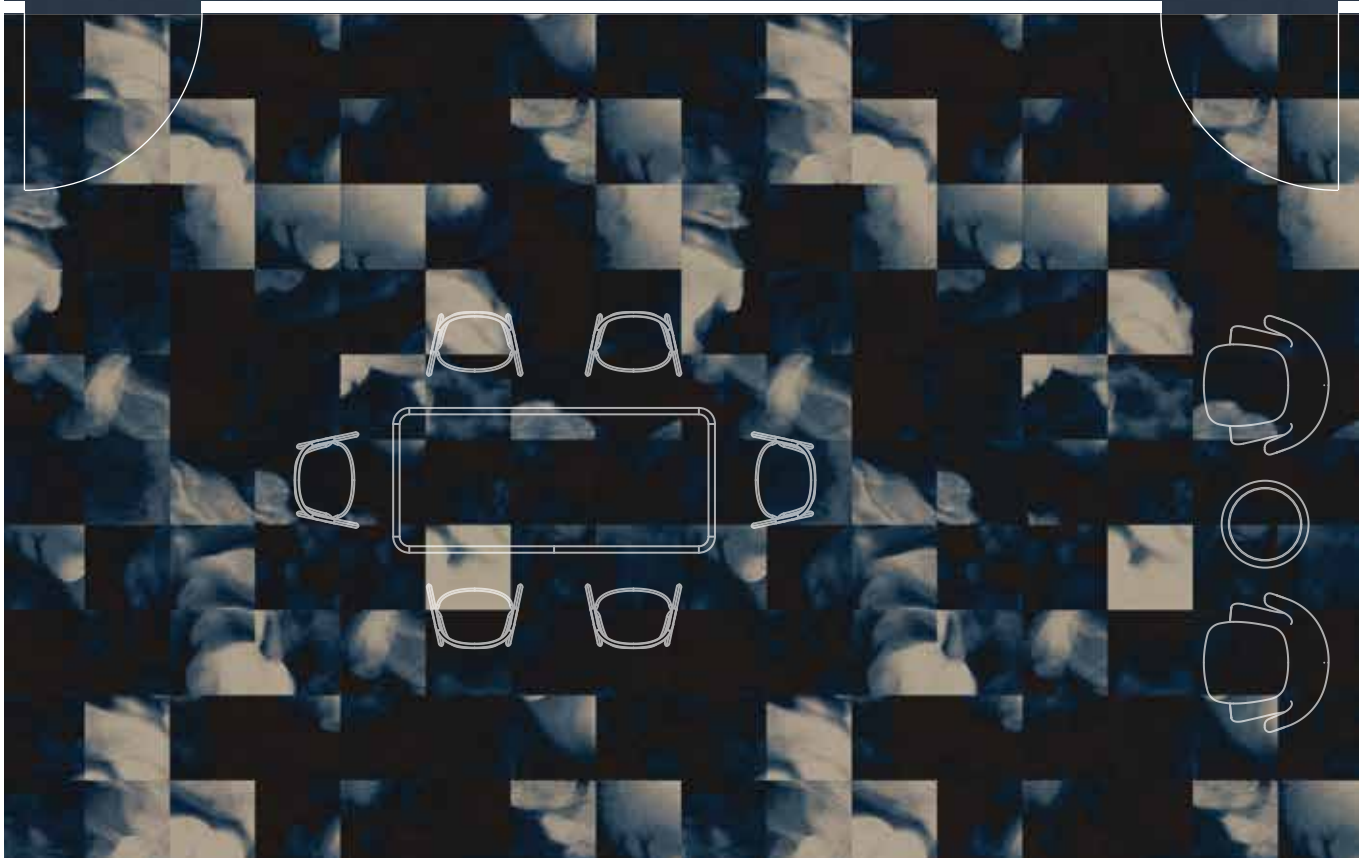
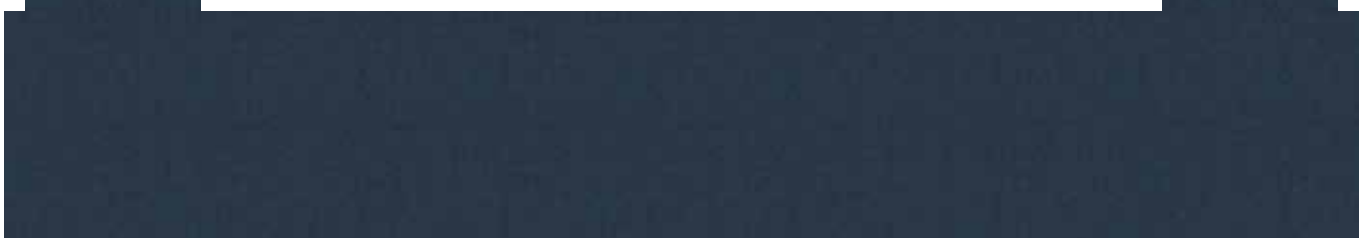
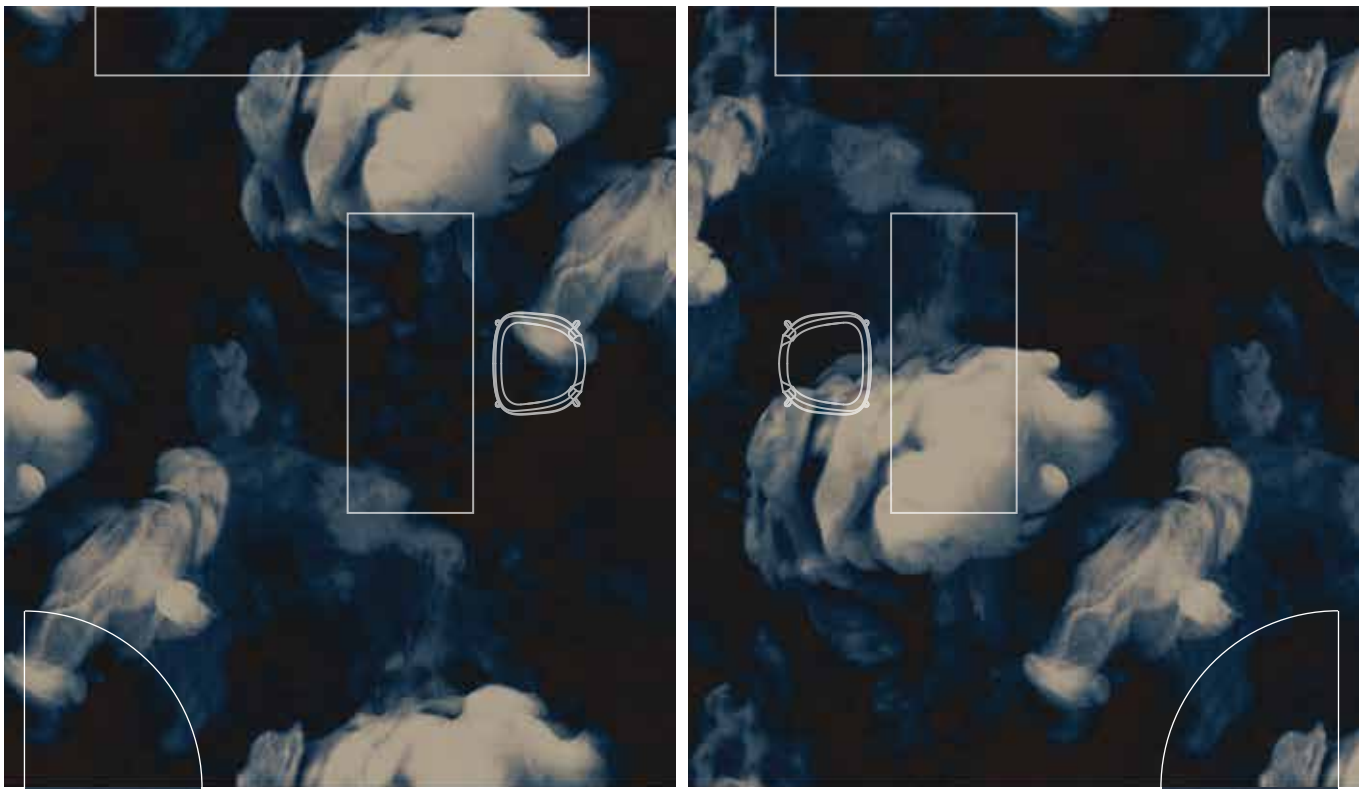


RF55951051 SMOKE  
w: 390.1 cm x l: 585.1 cm

5595



# Floorscape inspiration



# coal

Years of fossilisation produce the dark mysterious substance that powered the Industrial Revolution.





RF55001051 COAL

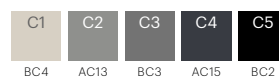
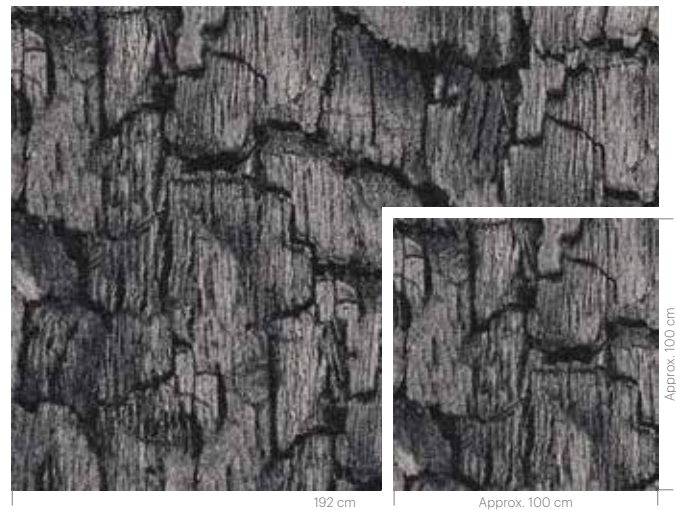
RFM55001050 COAL  
Installation example 4 x 3 tiles

5500



RF55001050 COAL  
w: 390.1 cm x l: 390.1 cm

5500



RFM55001051 COAL  
Installation example 4 x 3 tiles

5500



RF55001051 COAL  
w: 390.1 cm x l: 390.1 cm

5500



RF55001053 IRON / RF55001052 IRON / RFM55751051 IRON /  
RF55751051 IRON / RF55001054 IRON

# iron

The gradual disintegration of the oxidised metal surface that generates a random hued patination.



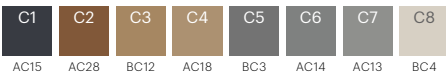






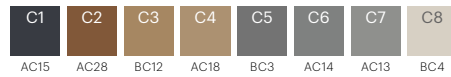
RFM55001052 IRON  
Installation example 4 x 3 tiles

5500



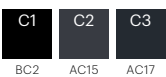
RF55001052 IRON  
w: 390.1 cm x l: 390.1 cm

5500



RFM55001053 IRON  
Installation example 4 x 3 tiles

5500



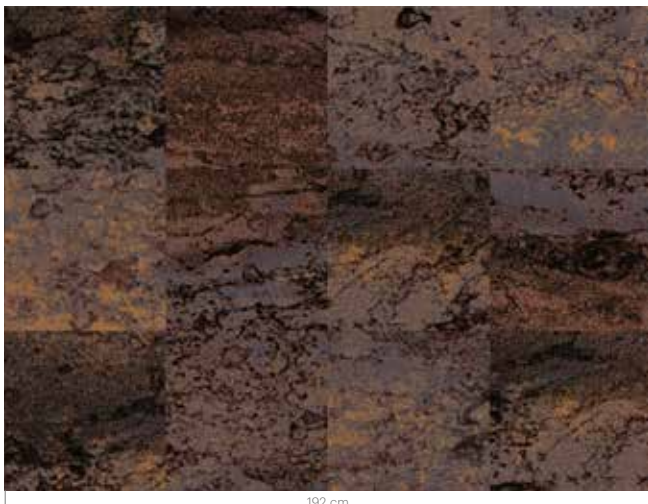
RF55001053 IRON  
w: 390.1 cm x l: 390.1 cm

5500



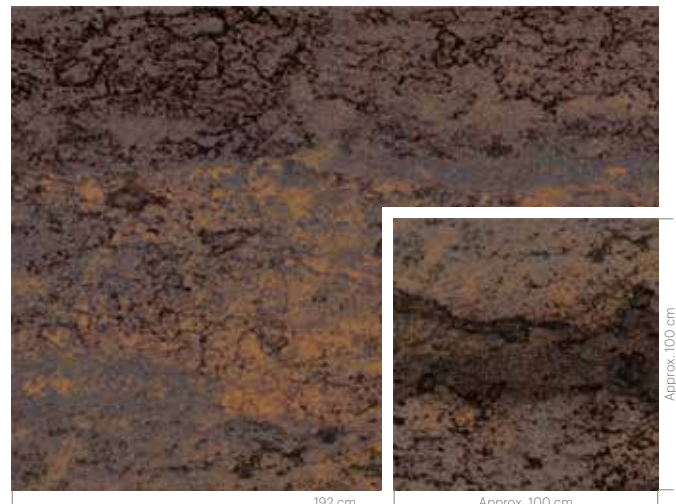
RFM55001054 IRON  
Installation example 4 x 3 tiles

5500



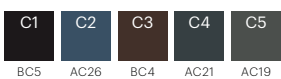
RF55001054 IRON  
w: 390.1 cm x l: 390.1 cm

5500



RFM55751051 IRON  
Installation example 4 x 3 tiles

5575



RF55751051 IRON  
w: 390.1 cm x l: 390.1 cm

5575



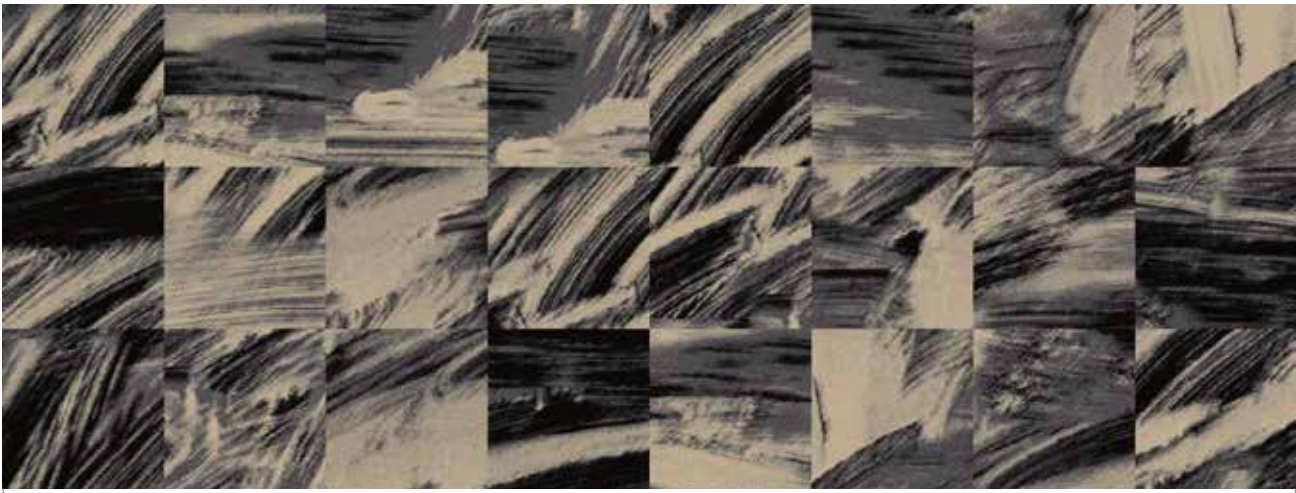
# wash

The constant evolution and regeneration of people, places and ideas from a city in flux.



RFM55951052 WASH  
Installation example 8 x 3 tiles

5595

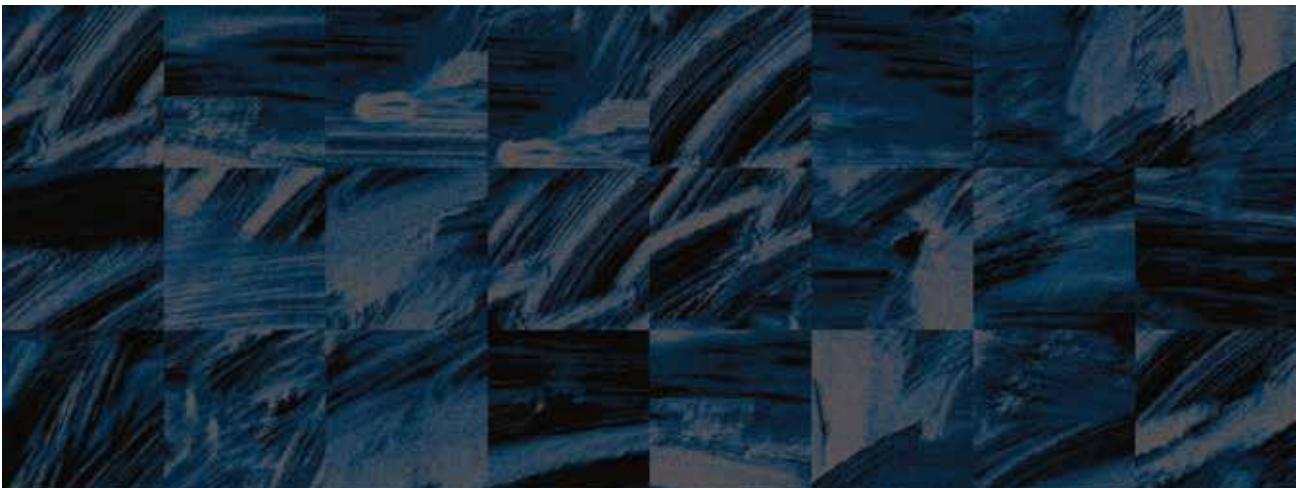


384 cm



RFM55951053 WASH  
Installation example 8 x 3 tiles

5595



384 cm





RF55951052 WASH  
w: 390.1 cm x l: 508 cm

5595



RF55951053 WASH  
w: 390.1 cm x l: 508 cm

5595



# blur

The distorted city reflections in transient bits of water like puddles and fresh rainfall.





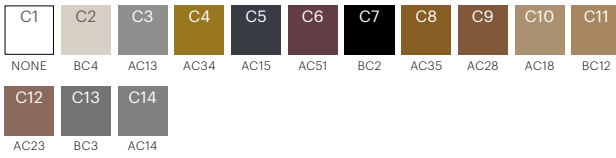
RFM55751052 BLUR II

RFM55001055 BLUR II  
Installation example 4 x 3 tiles

5500

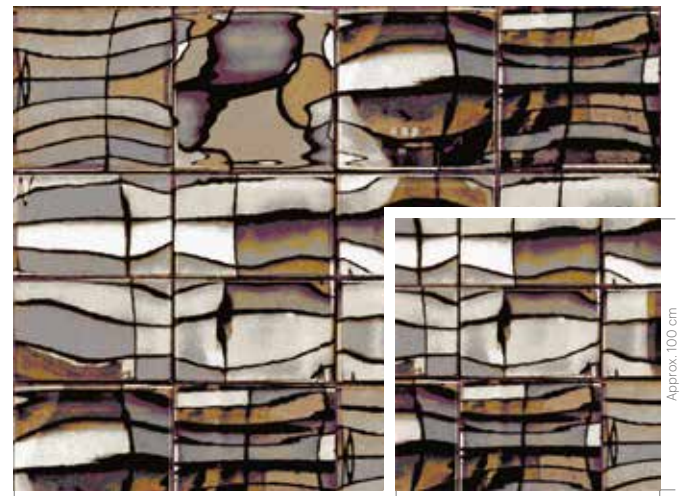


192 cm



RF55001055 BLUR II  
w: 390,1 cm x l: 227,1 cm

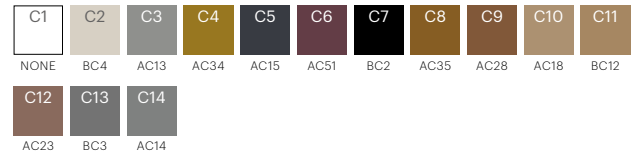
5500



192 cm

Approx. 100 cm

Approx. 100 cm



RFM55751052 BLUR II  
Installation example 4 x 3 tiles

5575

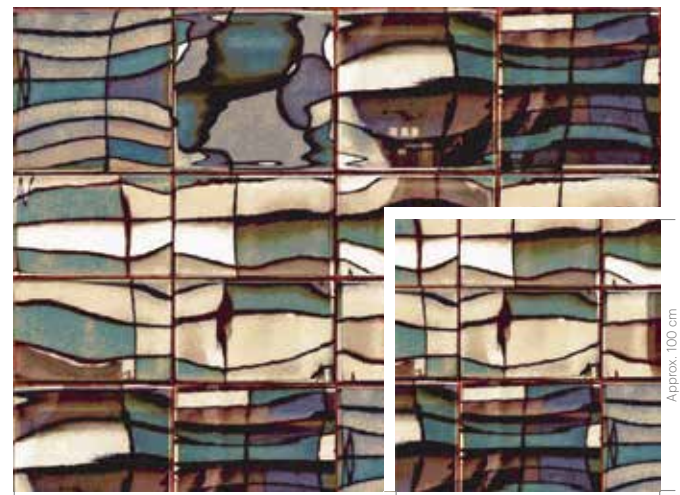


192 cm



RF55751052 BLUR II  
w: 390,1 cm x l: 227,1 cm

5575



192 cm

Approx. 100 cm

Approx. 100 cm



# tide

The marks exposed from the motion, sediment and flow of the historic and tidal River Thames.







RF55951054 TIDE

RFM55951054 TIDE

Installation example 4 x 3 tiles

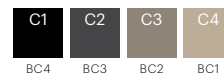
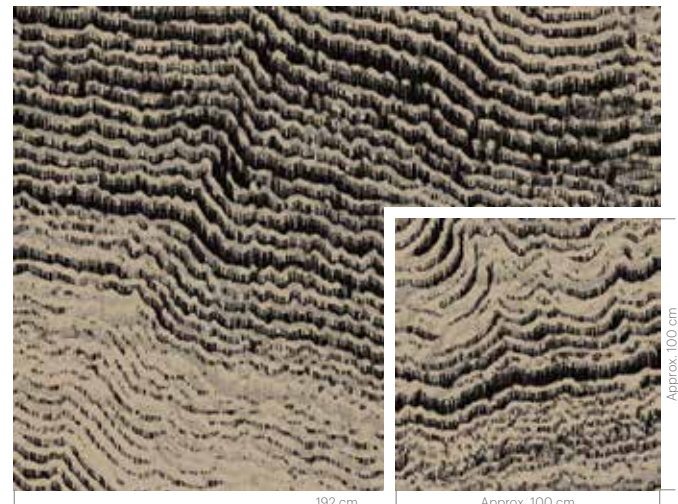
5595



RF55951054 TIDE

w: 390.1 cm x l: 797.6 cm

5595



RFM55951055 TIDE

Installation example 4 x 3 tiles

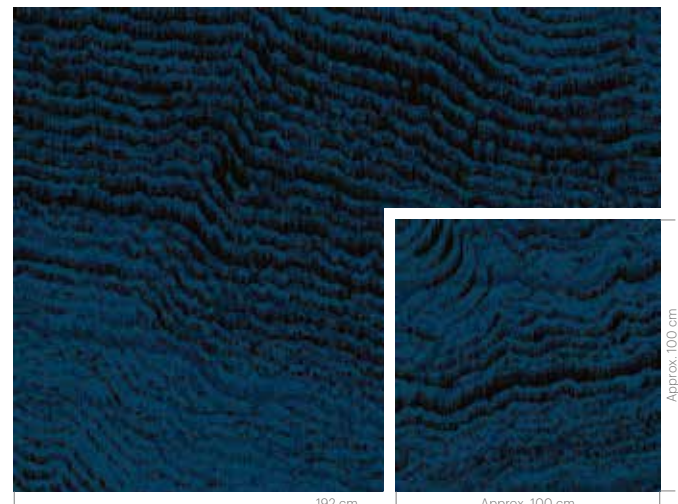
5595



RF55951055 TIDE

w: 390.1 cm x l: 797.6 cm

5595

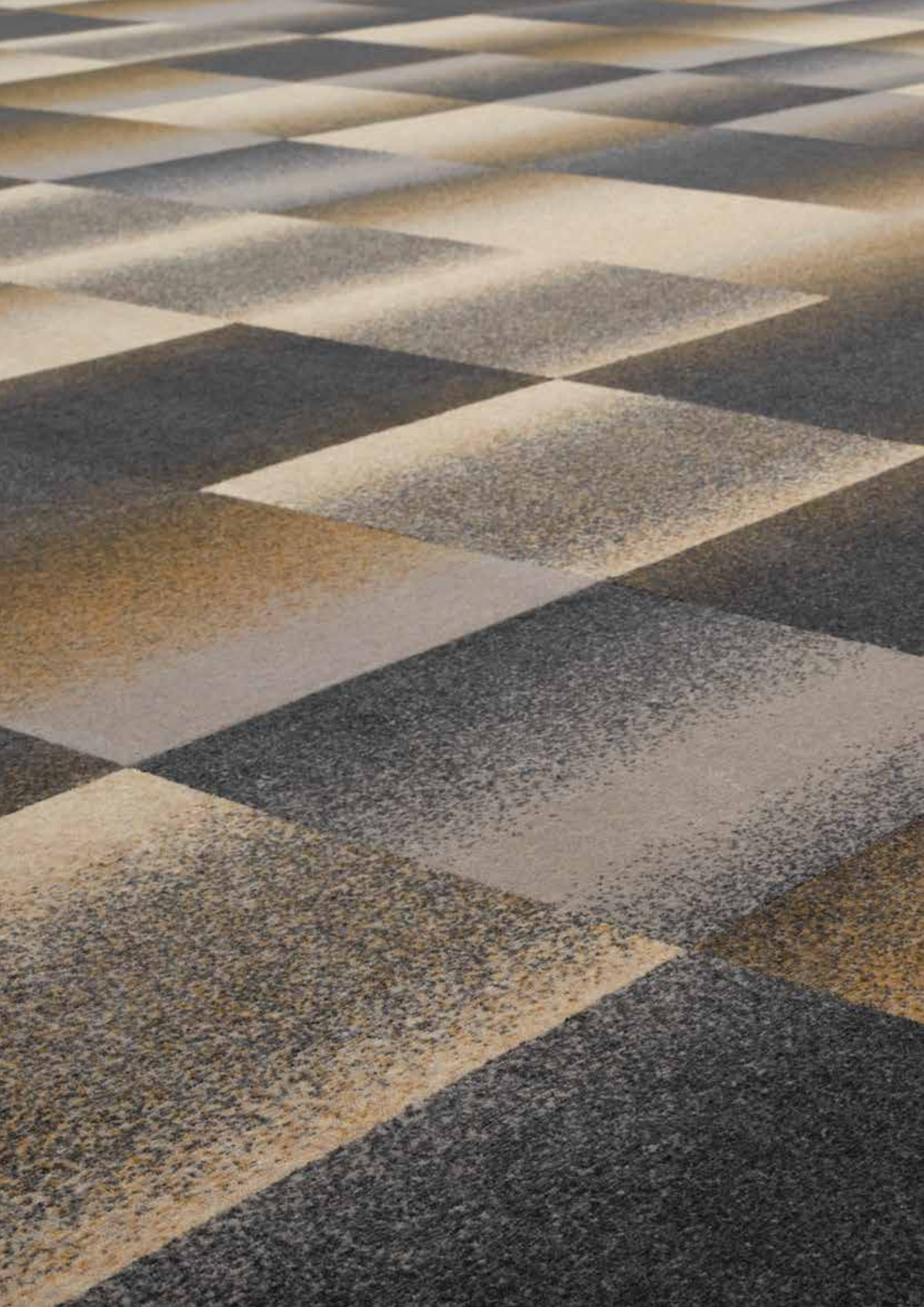


# brick

Handmade and glazed bricks are the symbol and defining material of the London cityscape.

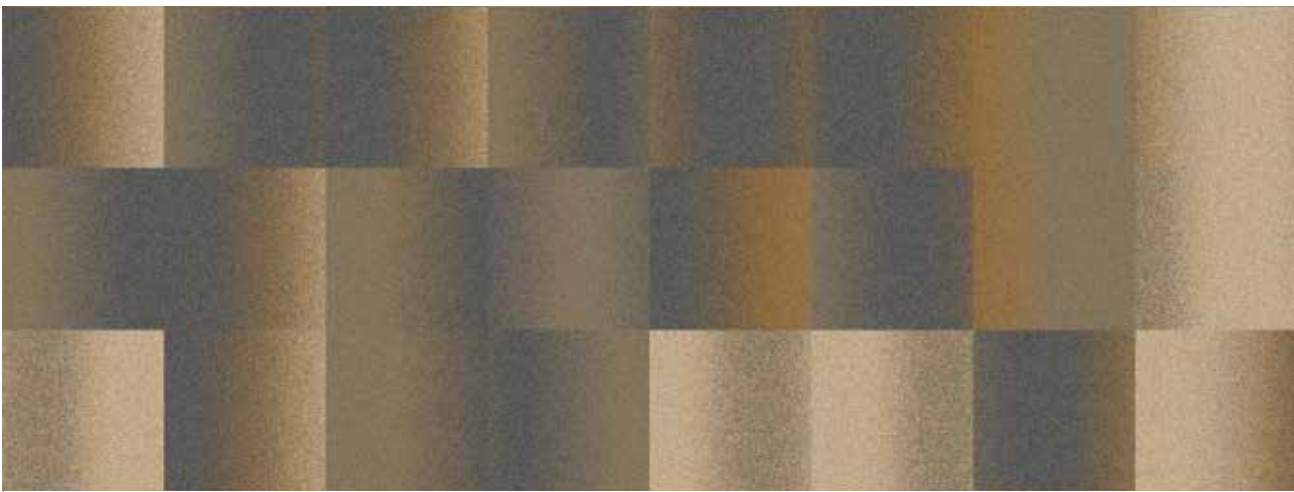






RFM55001056 BRICK II  
Installation example 8 x 3 tiles

5500



384 cm



RFM55751053 BRICK II  
Installation example 8 x 3 tiles

5575



384 cm



RF55001056 BRICK II  
w: 390,1 cm x l: 48,8 cm

5500



RF55751053 BRICK II  
w: 390,1 cm x l: 48,8 cm

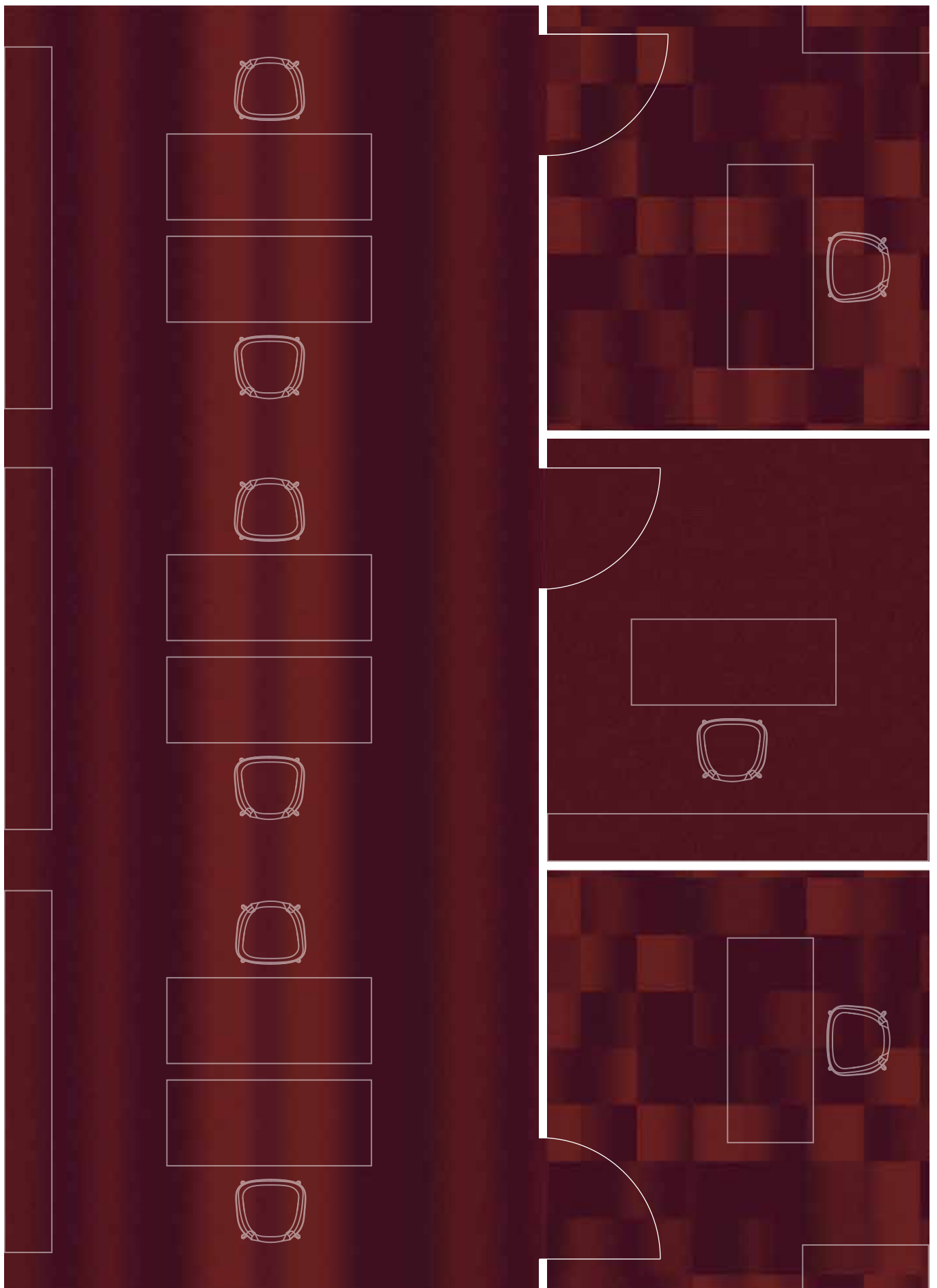
5575







# Floorscape inspiration





# Collection overview

## smoke

---

PURPLE



RFM & RF55751050  
Page 8-9

GREY



RFM & RF55951050  
Page 10

BLUE



RFM & RF55951051  
Page 10

## coal

---

GREY



RFM & RF55001050  
Page 15

BLACK



RFM & RF55001051  
Page 15

## iron

---

BEIGE



RFM & RF55001052  
Page 20

BLACK



RFM & RF55001053  
Page 20

BROWN



RFM & RF55001054  
Page 21

BLUE



RFM & RF55751051  
Page 21

## wash

---

GREY



RFM & RF55951052  
Page 24-25

BLUE



RFM & RF55951053  
Page 24-25

## blur II

---

LUSTRE



RFM & RF55001055  
Page 29

OILY

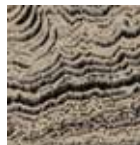


RFM & RF55751052  
Page 29

## tide

---

GREY



RFM & RF55951054  
Page 33

BLUE



RFM & RF55951055  
Page 33

## brick II

---

YELLOW



RFM & RF55001056  
Page 38-39

RUST



RFM & RF55751053  
Page 38-39

# Standard colour palettes

All designs are developed in one of four standard colour palettes as shown below. Each palette has 12 solid base colours (BC1-12) and 65 accent colours (AC13-77).

**5500** BASE COLOUR PALETTE

BC1	BC2	BC3	BC4
BC5	BC6	BC7	BC8
BC9	BC10	BC11	BC12

**5500** ACCENT COLOURS for use in areas of max. 50 x 50 cm

AC13	AC14	AC15	AC16	AC17	AC48	AC49	AC50	AC51	AC52
AC18	AC19	AC20	AC21	AC22	AC53	AC54	AC55	AC56	AC57
AC23	AC24	AC25	AC26	AC27	AC58	AC59	AC60	AC61	AC62
AC28	AC29	AC30	AC31	AC32	AC63	AC64	AC65	AC66	AC67
AC33	AC34	AC35	AC36	AC37	AC68	AC69	AC70	AC71	AC72
AC38	AC39	AC40	AC41	AC42	AC73	AC74	AC75	AC76	AC77
AC43	AC44	AC45	AC46	AC47					

**5520** BASE COLOUR PALETTE

BC1	BC2	BC3	BC4
BC5	BC6	BC7	BC8
BC9	BC10	BC11	BC12

**5520** ACCENT COLOURS for use in areas of max. 50 x 50 cm

AC13	AC14	AC15	AC16	AC17	AC48	AC49	AC50	AC51	AC52
AC18	AC19	AC20	AC21	AC22	AC53	AC54	AC55	AC56	AC57
AC23	AC24	AC25	AC26	AC27	AC58	AC59	AC60	AC61	AC62
AC28	AC29	AC30	AC31	AC32	AC63	AC64	AC65	AC66	AC67
AC33	AC34	AC35	AC36	AC37	AC68	AC69	AC70	AC71	AC72
AC38	AC39	AC40	AC41	AC42	AC73	AC74	AC75	AC76	AC77
AC43	AC44	AC45	AC46	AC47					

**5575** BASE COLOUR PALETTE

BC1	BC2	BC3	BC4
BC5	BC6	BC7	BC8
BC9	BC10	BC11	BC12

**5575** ACCENT COLOURS for use in areas of max. 50 x 50 cm

AC13	AC14	AC15	AC16	AC17	AC48	AC49	AC50	AC51	AC52
AC18	AC19	AC20	AC21	AC22	AC53	AC54	AC55	AC56	AC57
AC23	AC24	AC25	AC26	AC27	AC58	AC59	AC60	AC61	AC62
AC28	AC29	AC30	AC31	AC32	AC63	AC64	AC65	AC66	AC67
AC33	AC34	AC35	AC36	AC37	AC68	AC69	AC70	AC71	AC72
AC38	AC39	AC40	AC41	AC42	AC73	AC74	AC75	AC76	AC77
AC43	AC44	AC45	AC46	AC47					

**5595** BASE COLOUR PALETTE

BC1	BC2	BC3	BC4
BC5	BC6	BC7	BC8
BC9	BC10	BC11	BC12

**5595** ACCENT COLOURS for use in areas of max. 50 x 50 cm

AC13	AC14	AC15	AC16	AC17	AC48	AC49	AC50	AC51	AC52
AC18	AC19	AC20	AC21	AC22	AC53	AC54	AC55	AC56	AC57
AC23	AC24	AC25	AC26	AC27	AC58	AC59	AC60	AC61	AC62
AC28	AC29	AC30	AC31	AC32	AC63	AC64	AC65	AC66	AC67
AC33	AC34	AC35	AC36	AC37	AC68	AC69	AC70	AC71	AC72
AC38	AC39	AC40	AC41	AC42	AC73	AC74	AC75	AC76	AC77
AC43	AC44	AC45	AC46	AC47					

# Recolour steps

Try our recolour tool at [egecarpets.com](http://egecarpets.com)

SELECT DESIGN

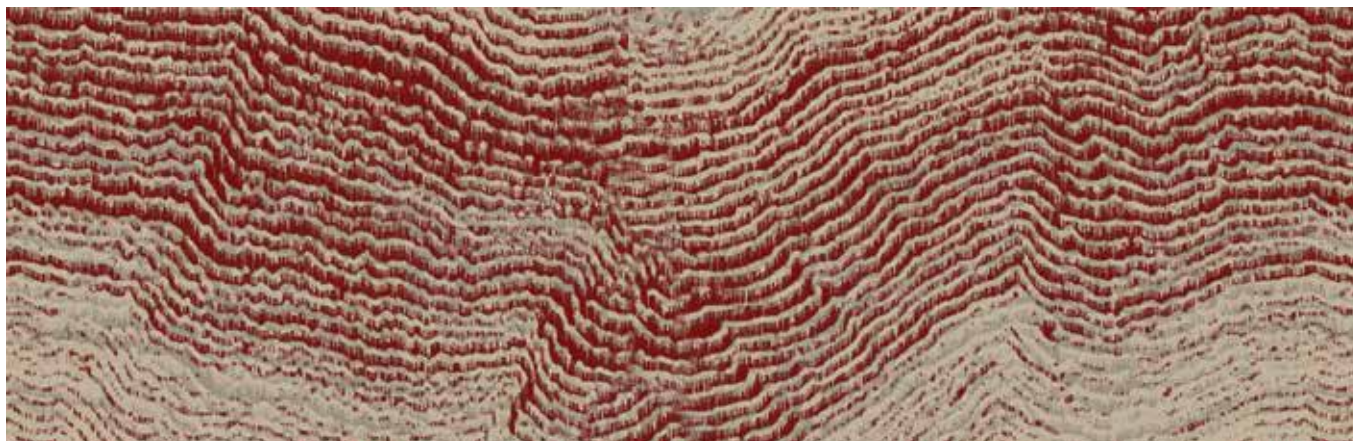
RF55951054



CHANGE COLOUR OF BACKGROUND

Choose between BC1-12 and in areas of max. 50 x 50 cm also choose accent colours

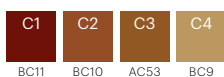
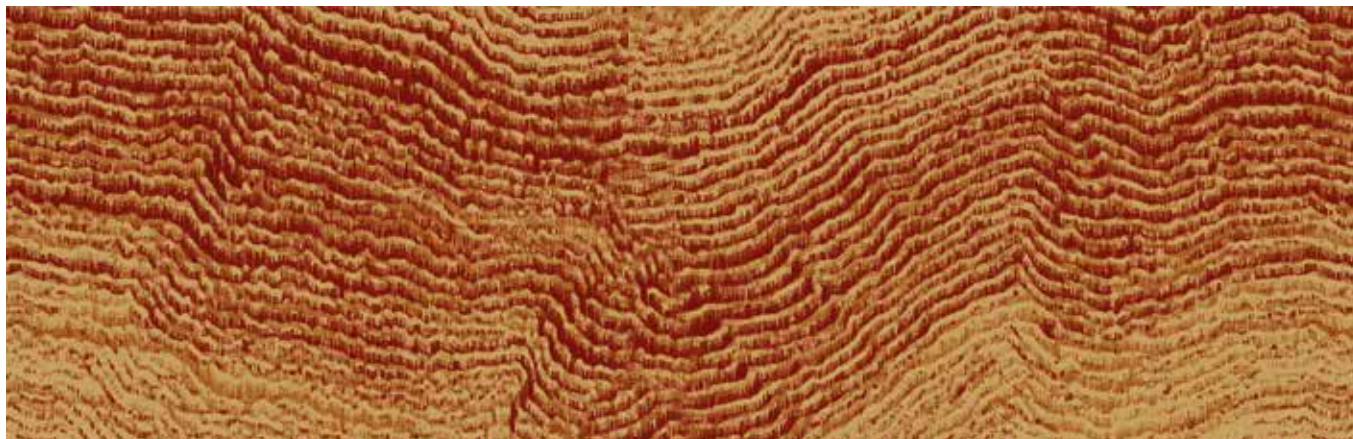
EF16102-100



CHANGE PATTERN COLOUR

Choose between BC1-12 and accent colours from the same colour palette as used for background

EF16102-1206







KALIBRERES



Ca 1.2 bar



Ca 2.5 bar

SKALING  
KALIBRERES



Ca 2.2 bar

TRYK







## Let's weave a greener future

### Our long-term ambition

We want to create the world's most sustainable carpets. It's an ongoing process where we continuously set up new goals and initiatives within five focus areas. Read more about our ambitious 2030 goals at [egecarpets.com](https://egecarpets.com).

### Ege CircleBack

With our revolutionary take-back concept more than 95% of your old carpet can be recycled in various ways instead of ending up as waste. Ege CircleBack is available for a selection of our carpets and we keep adding more collections to the concept.

### Cradle to Cradle

All our carpets are Cradle to Cradle Certified®. The idea behind Cradle to Cradle is that the Earth's finite resources shouldn't go to waste. They should be re-used in new contexts, with no detrimental effect on people or the environment.

### Indoor Air Comfort Gold

All our carpets are Indoor Air Comfort Gold certified, showing compliance of product emissions with the criteria of many of the voluntary specifications issued by the most relevant ecolabels and similar specifications in the EU. Gold certified products are best-in-class for low emissions and good for indoor air quality.

### EcoVadis

Our sustainability excellence has been recognised by EcoVadis with the highest score in its class. EcoVadis is the world's leading sustainability rating agency, and they rank the CSR performance of 100,000 companies in 160 countries. The Platinum ranking puts us in the top 1%.

### Terms and conditions

The Industrial Landscape collection features seven design themes. Each of them is available as carpet tiles and planks as well as broadloom creating different expressions within the same design theme. Tiles, planks and broadloom can be mixed together or combined with other Ege Carpets collections to get a truly unique flooring solution for not only one room but also for projects with several spaces.

- 7 designs
- Recolour options (see page 45)
- 9 standard broadloom qualities (see specifications at [egecarpets.com](https://egecarpets.com))
- No minimum order requirements for broadloom
- 6 standard qualities for 48x48 cm, 96x96 cm tiles and 24x96 cm planks (see specifications at [egecarpets.com](https://egecarpets.com))
- Minimum order from 40 m<sup>2</sup> for tiles and planks
- Undisputed performance standard EN 1307
- Performance classification to fit any need; extra heavy use
- 24-hour sample service and eco-friendly shipping option of 5-7 days (within Europe only)
- Dispatch within 2 weeks from receipt of order for broadloom and 48x48 cm tiles
- Dispatch within 3 weeks for 96x96 cm tiles and 24x96 cm planks
- Ege CircleBack available for broadloom 910 g/m<sup>2</sup> and 1100 g/m<sup>2</sup> with WT backing





BY APPOINTMENT TO THE ROYAL DANISH COURT

Ege Carpets A/S

**thanks**

Tom Dixon · Helene Bangsbo Andersen, Creative  
Director Tom Dixon · Micaela Silva, Senior Designer  
Tom Dixon · Karen Nybo, Designer Ege Carpets ·  
Susanne Lykke, Visual Communication Manager Ege  
Carpets · Mikkel Mortensen, Photographer Yellows ·  
Lene Ronfeldt, Interior Stylist





**ege**<sup>®</sup>

[egecarpets.com](http://egecarpets.com)