

ATELIER

by Monsieur Christian Lacroix

Designer Collection by

ege[®]

ATELIER

by Monsieur Christian Lacroix







Like a comforting carpet that has always been in the family home, a lucky pebble carried everywhere in your pocket, a travel book that accompanies you on your journey full of inspiration, notes and discoveries.

WDFW

CONTENTS

- 12 Textile
- 26 Mineral
- 38 Gravure
- 55 Collection overview
- 58 Colour palettes
- 59 Recolour options
- 61 Terms and conditions
- 64 Custom design

TEXTILE

The carpet is as much an item of clothing as it is a covering. It adorns the floor in the way a wallpaper adorns the walls, or a fabric dresses the body. So it seems obvious to me to treat the opening theme of this first collaboration with Ege Carpets as a collection of fabrics. A collection of historical textiles, timeless from ages past and different kinds of cultures, and always an endless inspiration to me. Traditional cashmeres, ethnic fabrics embroidered with sequins in a trompe-l'oeil effect and beautiful weaved folk ribbons. All coordinated with more quiet monochrome patterns; a draped effect in ruffled velvet, herringbone or friezes as well as more plain, textured effects, in warm and cold colour palettes dominated by blues, gold and ancient reds.









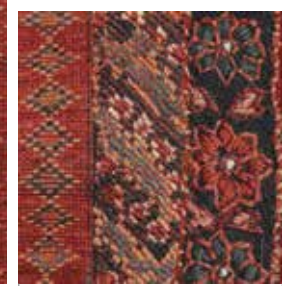
400 cm

Approx. 100 cm

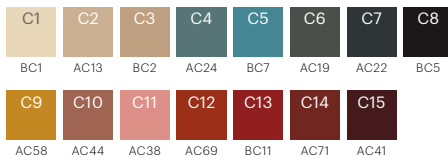
Approx. 100 cm

C1	C2	C3	C4	C5	C6	C7	C8	C9	C10	C11	C12	C13	C14	C15
BC1	AC13	BC2	AC24	BC7	AC19	AC22	BC5	AC58	AC44	AC38	AC69	BC11	AC71	AC41

RF5575801 PERSE RUNNER 5575
w: 130 cm x l: 390.1 cm Background RF5575803



Approx. 100 cm



RF5575802 PERSE CORRIDOR 5575
w: 195.1 cm x l: 390.1 cm Background RF5575803



Approx. 100 cm



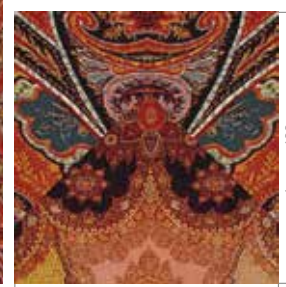
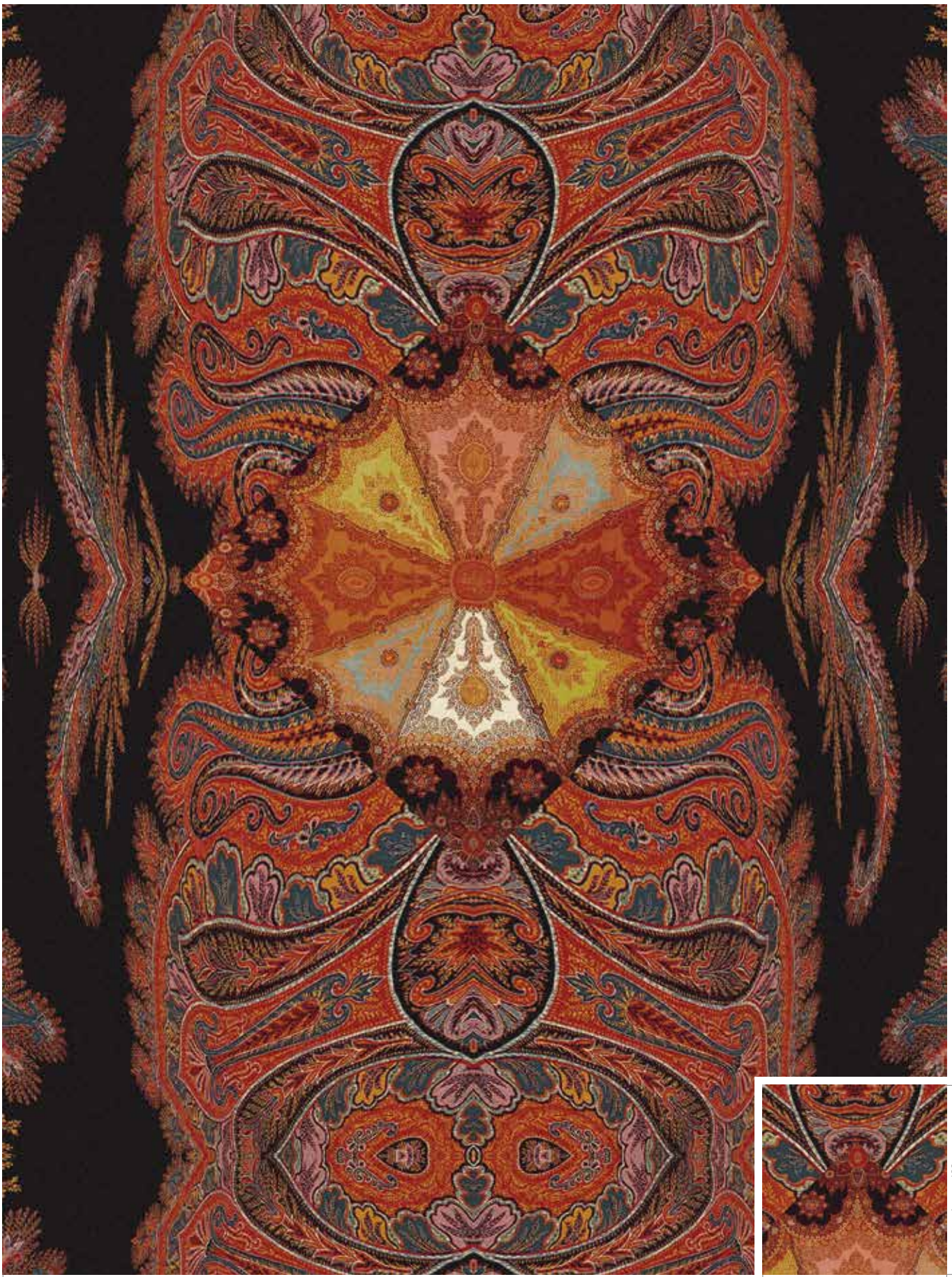
RF5575803 TOILE 5575
w: 195.1 cm x l: 195.1 cm



Approx. 100 cm



400 cm



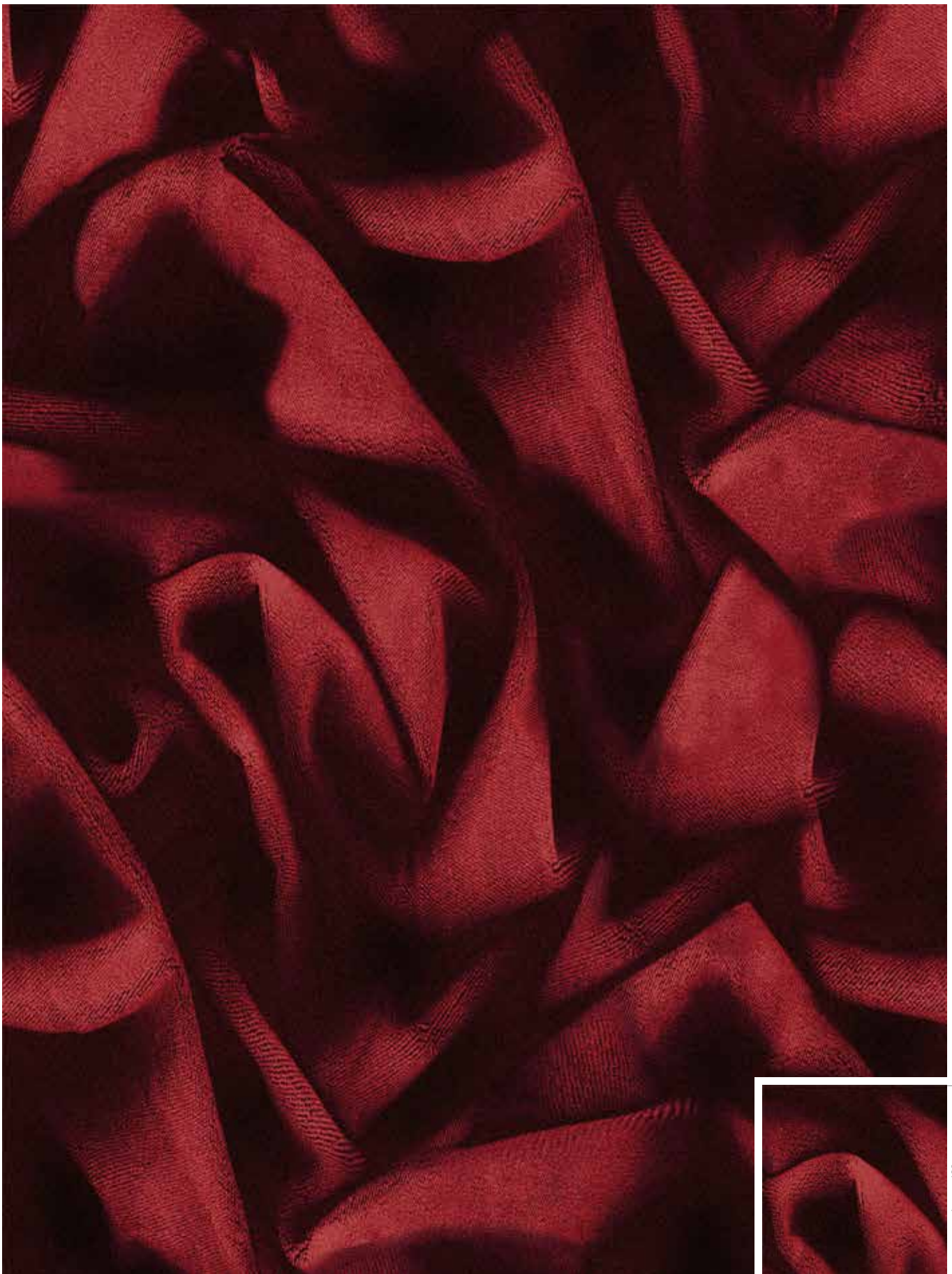
400 cm

Approx. 100 cm

C1	C2	C3	C4	C5	C6	C7	C8	C9	C10	C11	C12	C13	C14	C15	C16	C17	C18
BC5	AC22	AC26	BC7	AC24	BC12	AC71	BC11	AC59	AC58	AC38	AC50	BC8	AC53	BC2	AC13	BC1	NONE

FLOORSCAPE INSPIRATION





400 cm

Approx. 100 cm

Approx. 100 cm





RF5595800 RUBAN
w: 195.1 cm x l: 211.1 cm

5595



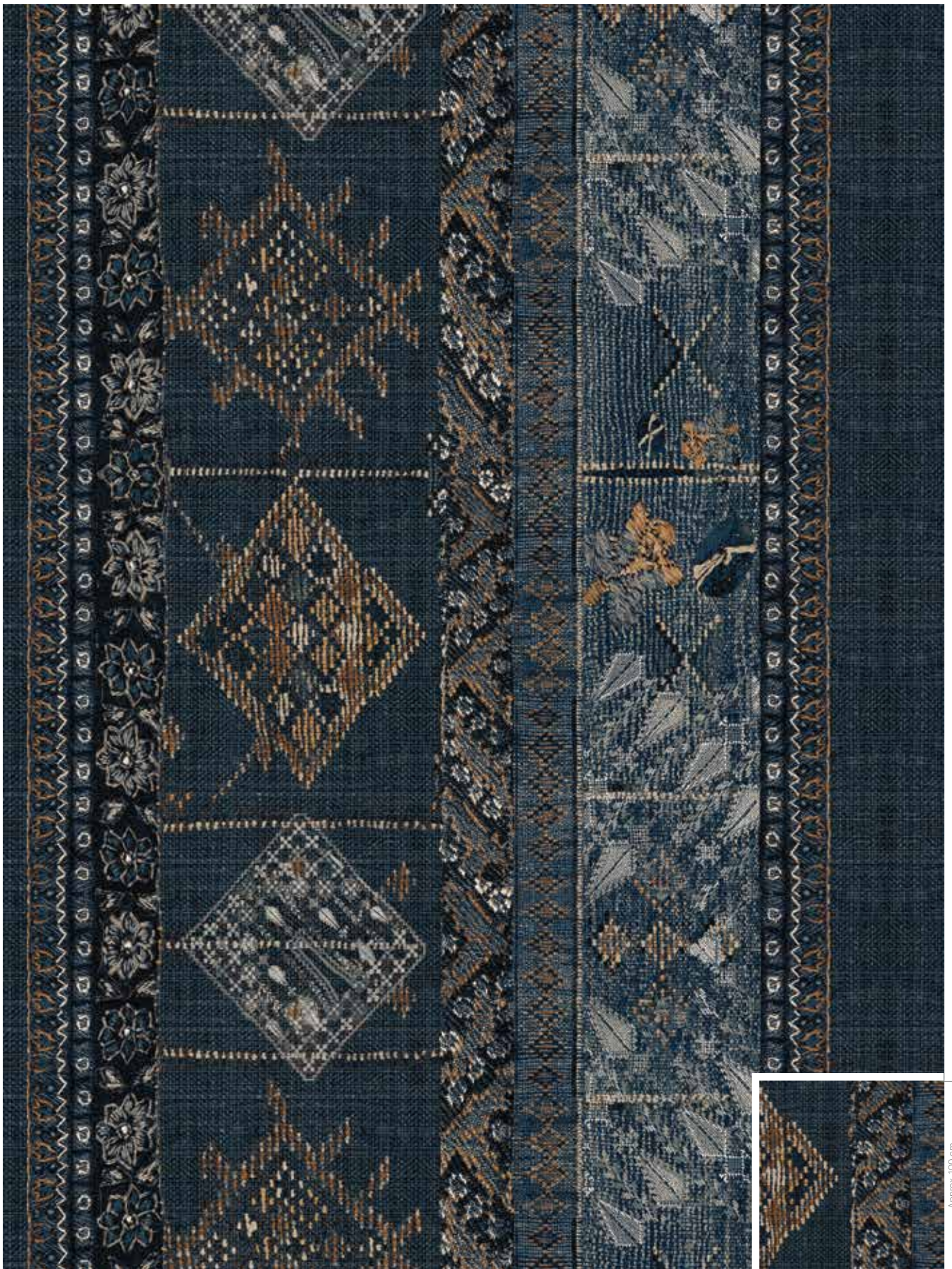
RF5595801 TOILE
w: 195.1 cm x l: 195.1 cm

5595



RF5595802 INDIENNE - ROOM LEFT w: 400 cm x l: 3901 cm
 RF5595803 INDIENNE - ROOM RIGHT w: 400 cm x l: 3901 cm

Background RF5595801 5595
 Background RF5595801 5595



400 cm

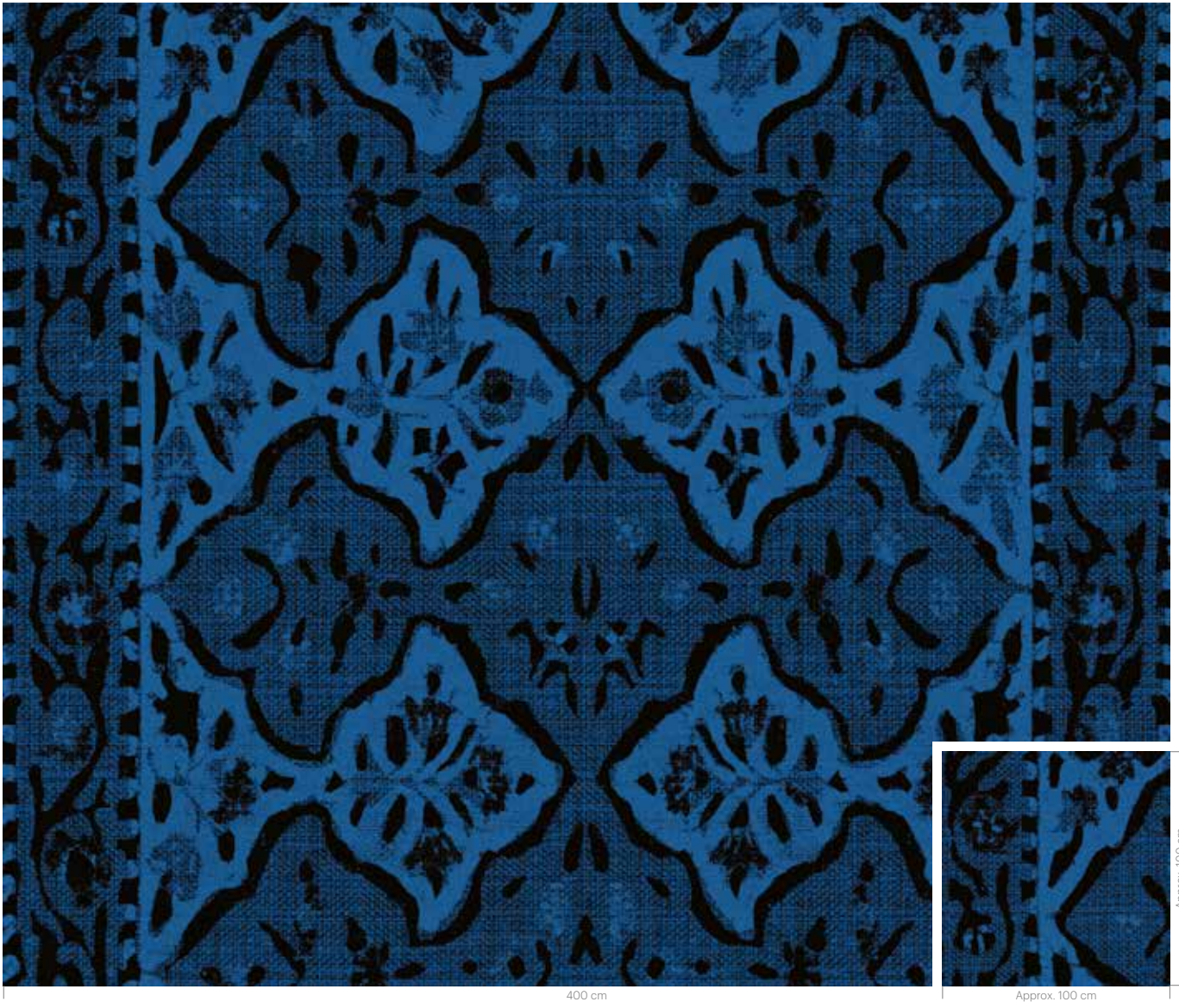
Approx. 100 cm

Approx. 100 cm

C1	C2	C3	C4	C5	C6	C7	C8	C9	C10	C11	C12	C13
NONE	BC1	AC18	BC2	AC43	BC6	BC5	BC4	BC9	AC53	AC50	BC3	AC45

RF5520800 SARI
w: 390.1 cm x l: 390.1 cm

5520
Background RF5520801



C1	C2	C3	C4
AC54	BC12	BC10	BC11

RF5520801 TOILE
w: 195.1 cm x l: 195.1 cm

5520



C1	C2	C3	C4
AC54	BC10	BC11	BC12







RF5595804 CALADES
w: 390.1 cm x l: 390.1 cm

5595

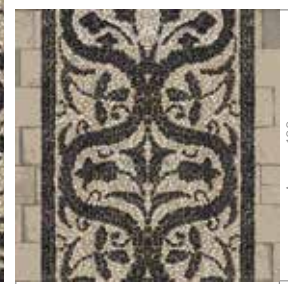


RF5595805 CALADES II
w: 130 cm x l: 108 cm

5595



RF5595806 CALADES RUNNER 5595
w: 130 cm x l: 106.9 cm Background RF5595808



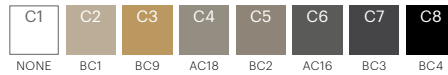
Approx. 100 cm



RF5595807 CALADES CORRIDOR 5595
w: 195.1 cm x l: 320.8 cm Background RF5595808



Approx. 100 cm



RF5595808 CHAUSSÉE 5595
w: 130 cm x l: 106.9 cm



400 cm

Approx. 100 cm





RF5595809 CARREAUX RUNNER 5595
w: 130 cm x l: 307.3 cm Background RF5595814

RF5595811 CARREAUX RUNNER END 5595
w: 130 cm x l: 60.2 cm

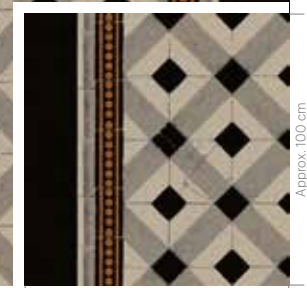
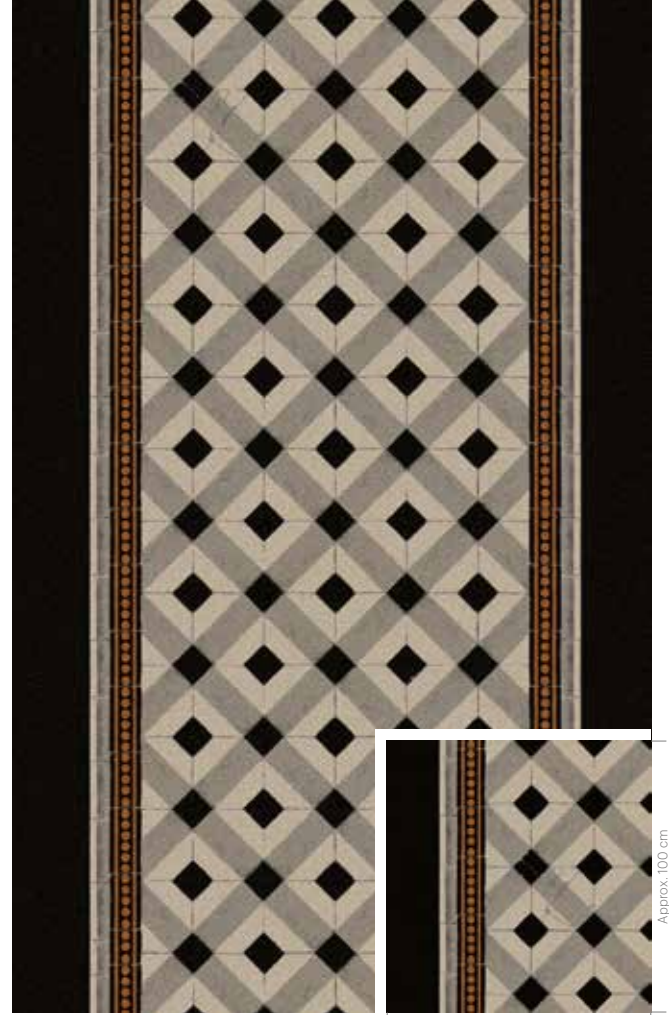
RF5595810 CARREAUX BORDER 5595
w: 48.8 cm x l: 73.9 cm



RF5595812 CARREAUX CORRIDOR 5595
w: 195.1 cm x l: 307.3 cm Background RF5595814

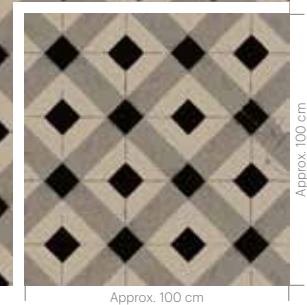
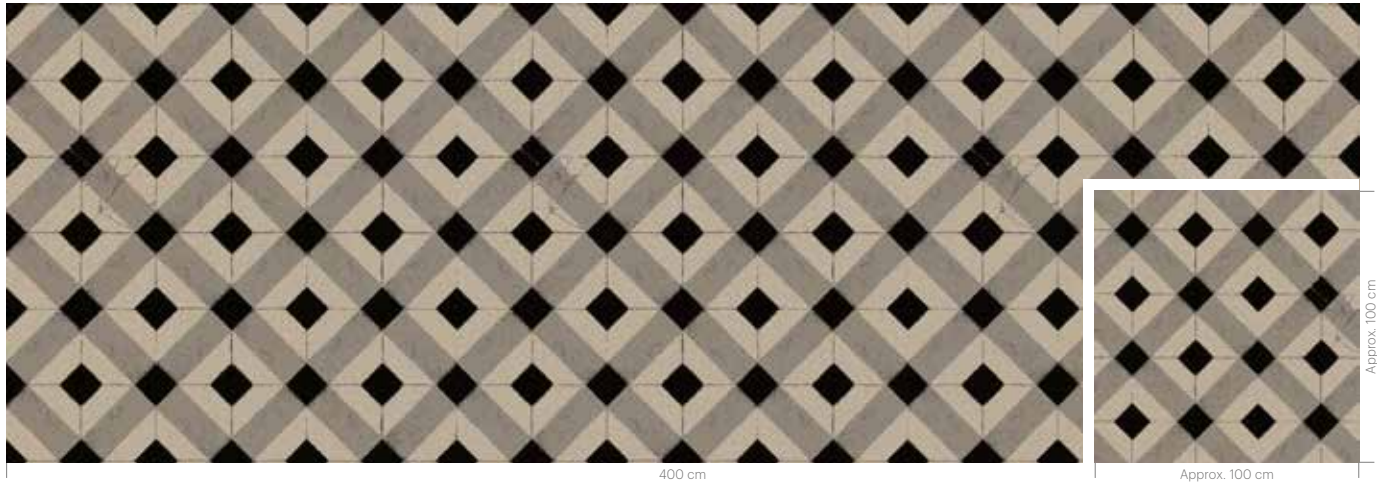
RF5595813 CARREAUX CORRIDOR END 5595
w: 195.1 cm x l: 81.3 cm

RF5595810 CARREAUX BORDER 5595
w: 48.8 cm x l: 73.9 cm



RF5595814 CARREAUX
w: 390.1 cm x l: 307.3 cm

5595





400 cm

Approx. 100 cm

Approx. 100 cm

C1	C2	C3	C4	C5	C6	C7	C8	C9	C10	C11	C12
BC1	AC18	AC14	BC2	AC75	AC23	BC9	AC53	BC10	AC49	AC50	BC4

For me the carpet is a blank canvas upon which to express my passions, drawings, collages, prints in black and white or in colour and albums of old pictures from my personal archives.

LOLITA

GRAVURE

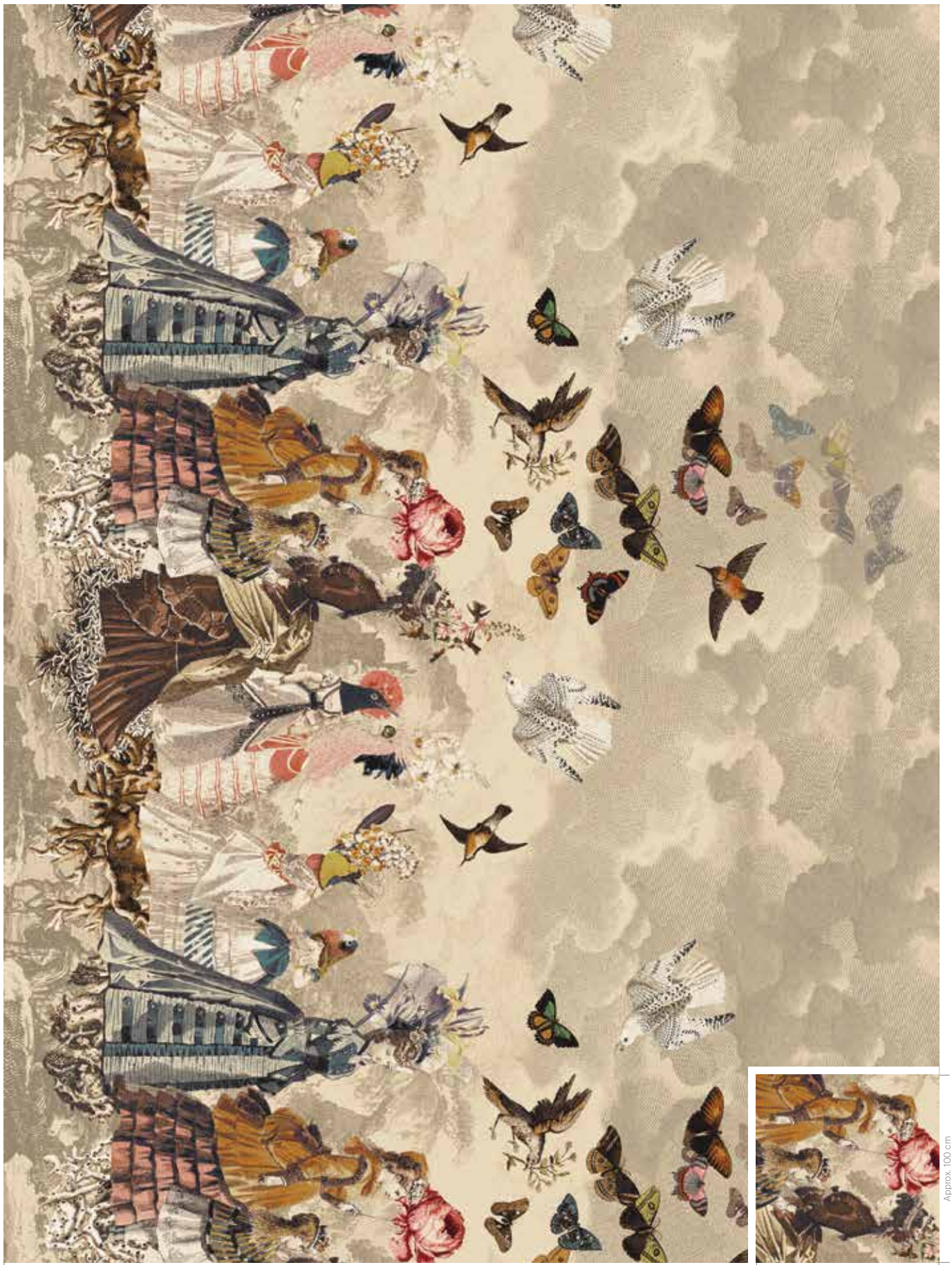
Finally, for me, the carpet is a blank canvas upon which to express my passions, drawings, collages, prints in black and white or in colour and albums of old pictures from my personal archives.

For this third theme, the carpet is adorned with a collection of etchings of an imaginary landscape freely inspired by a Provençal town or lush Mediterranean hills, a scrapbook containing a patchwork of 19th century fashion and flights of butterflies, abstract sketches or graffiti, and streaks of ink to complete the cloud motifs.



RF5575805 PAPILLONS - ROOM LEFT w: 400 cm x l: 585.2 cm
 RF5575806 PAPILLONS - ROOM RIGHT w: 400 cm x l: 585.2 cm

Background RF5575807 5575
 Background RF5575807 5575



400 cm

Approx. 100 cm

C1	C2	C3	C4	C5	C6	C7	C8	C9	C10	C11	C12	C13	C14	C15	C16	C17	C18	C19	C20	C21	C22	C23	C24	C25	C26	C27
AC14	AC13	BC1	BC3	BC5	BC12	BC4	AC65	BC11	AC69	AC44	AC58	BC10	AC38	AC30	AC35	AC26	AC29	AC24	AC50	AC53	AC19	AC15	NONE	AC40	AC28	BC2

Approx. 100 cm



400 cm

Approx. 100 cm

C1	C2	C3	C4
BC1	AC13	AC14	BC3

Approx. 100 cm

RF5575808 PAPILLONS - ROOM LEFT w: 400 cm x l: 585.2 cm
 RF5575809 PAPILLONS - ROOM RIGHT w: 400 cm x l: 585.2 cm

Background RF5575810 5575
 Background RF5575810 5575



C1	C2	C3	C4	C5	C6	C7	C8	C9	C10	C11	C12	C13	C14	C15	C16	C17	C18	C19	C20	C21	C22	C23	C24	C25	C26	C27
AC19	BC6	BC5	BC12	BC4	AC65	BC11	AC69	AC44	AC58	BC10	AC38	AC30	AC35	AC26	AC29	AC24	AC50	AC53	BC3	AC15	AC13	BC1	NONE	AC40	AC28	BC2

RF5575811 PAPILLONS - ROOM LEFT w: 400 cm x l: 585.2 cm
 RF5575812 PAPILLONS - ROOM RIGHT w: 400 cm x l: 585.2 cm

Background RF5575813 5575
 Background RF5575813 5575



C1	C2	C3	C4	C5	C6	C7	C8	C9	C10	C11	C12	C13	C14	C15	C16	C17	C18	C19	C20	C21	C22	C23	C24	C25	C26	C27
BC5	AC21	BC3	AC15	BC12	BC4	AC65	BC11	AC69	AC44	AC58	BC10	AC38	AC30	AC35	AC26	AC29	AC24	AC50	AC53	AC19	AC13	BC1	NONE	AC40	AC28	BC2

RF5595826 PAPILLONS - ROOM LEFT w: 400 cm x l: 585.2 cm
 RF5595816 PAPILLONS - ROOM RIGHT w: 400 cm x l: 585.2 cm

Background RF5595817 5595
 Background RF5595817 5595



C1	C2	C3	C4	C5	C6	C7	C8	C9	C10	C11
BC3	BC2	BC1	AC18	NONE	AC43	BC6	AC44	AC45	BC5	BC12

RF5575810 NUAGES
w: 195.1 cm x l: 195.1 cm

5575



RF5575813 NUAGES
w: 195.1 cm x l: 195.1 cm

5575

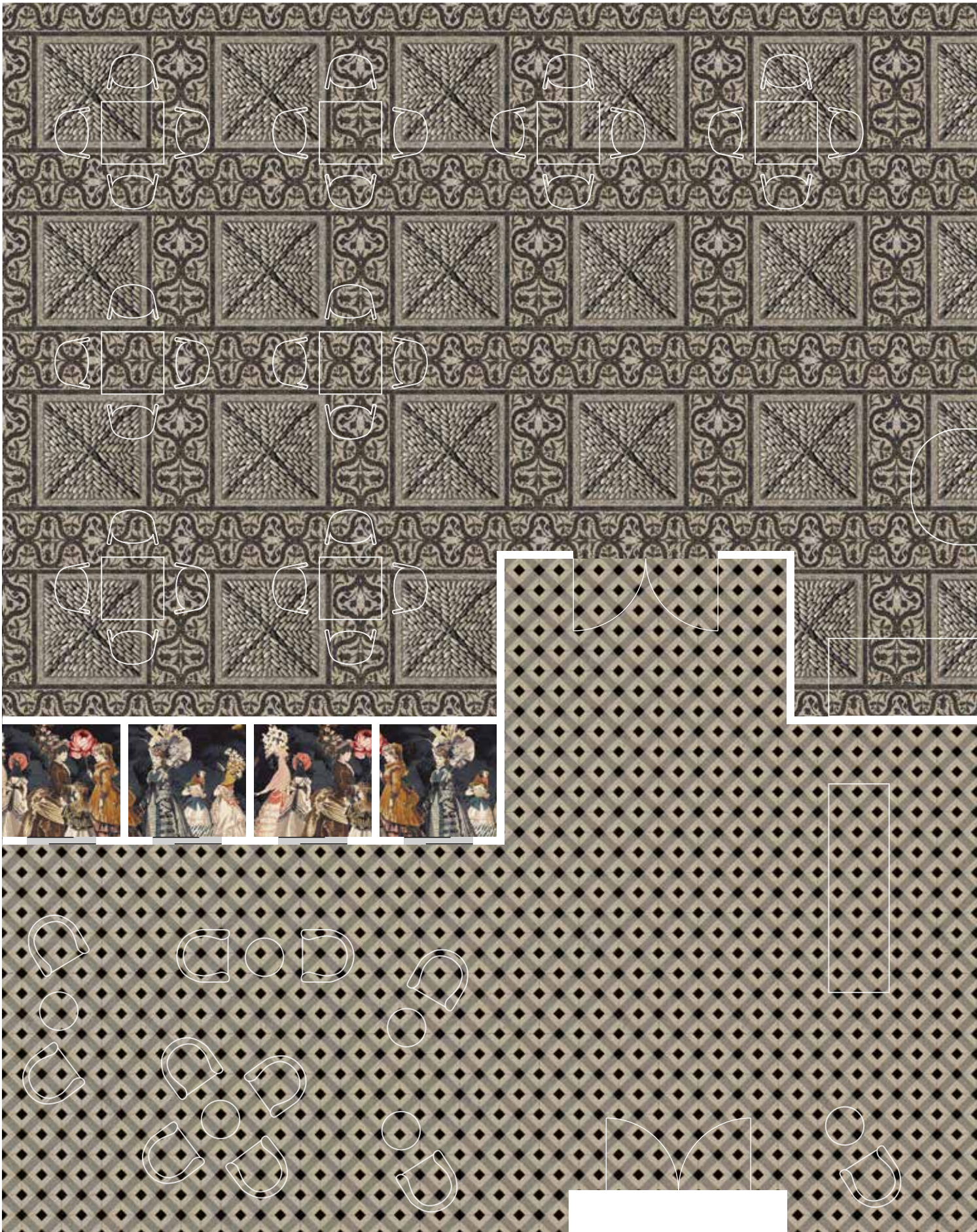


RF5595817 NUAGES
w: 195.1 cm x l: 195.1 cm

5595



FLOORSCAPE INSPIRATION









RF5595818 PANORAMA - ROOM LEFT w: 400 cm x l: 780.3 cm
 RF5595819 PANORAMA - ROOM RIGHT w: 400 cm x l: 780.3 cm

Background RF5595820 5595
 Background RF5595820 5595



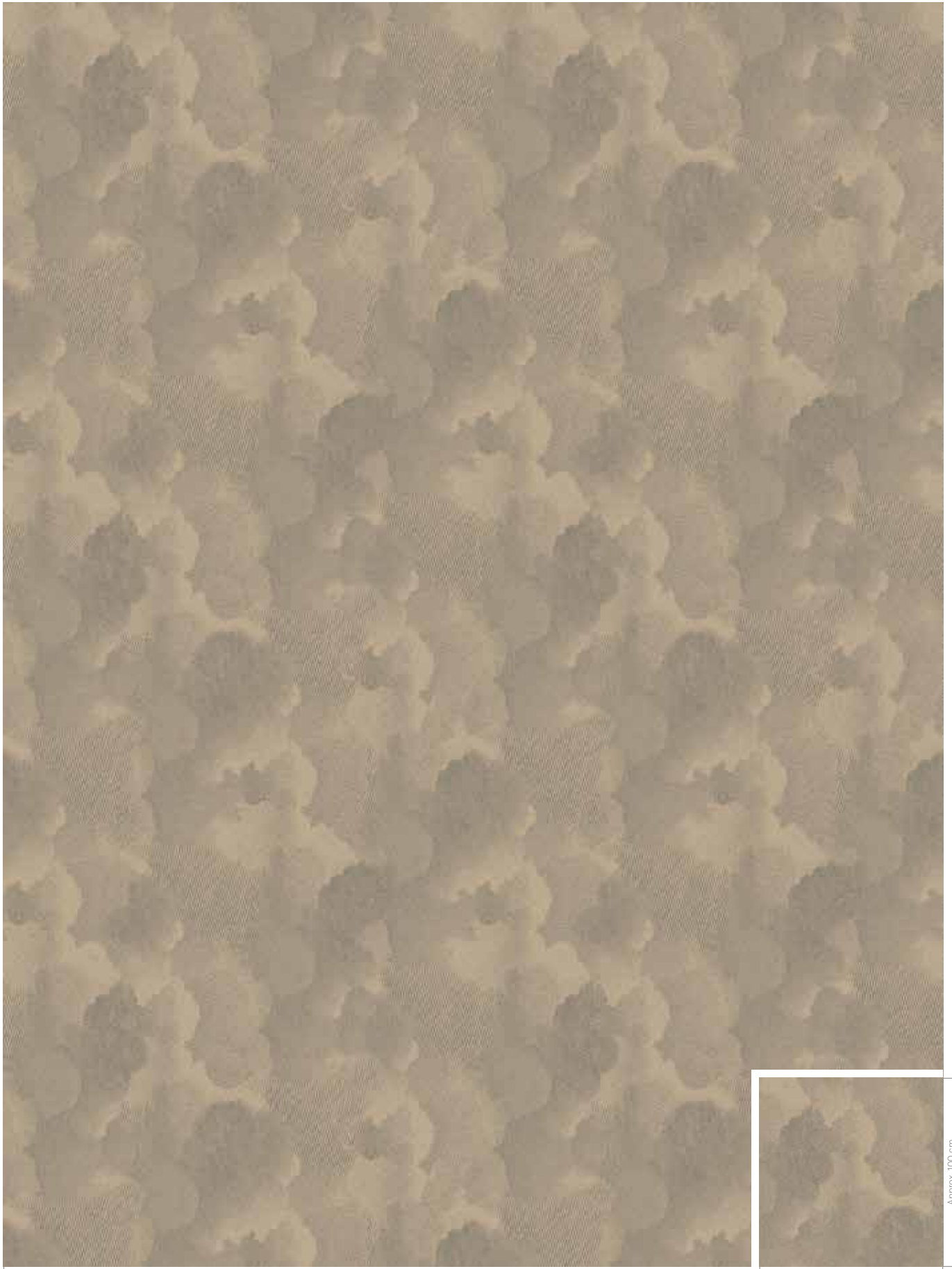
400 cm



Approx. 100 cm

Approx. 100 cm

C1	C2	C3	C4	C5	C6	C7	C8	C9
BC1	AC18	BC2	AC16	BC9	BC8	AC31	BC7	BC4



400 cm

Approx. 100 cm

C1	C2	C3	C4
BC1	BC9	BC2	AC16

RF5595821 NUAGES CORRIDOR
w: 195.1 cm x l: 195.1 cm

5595



Approx. 100 cm

Approx. 100 cm



RF5595822 NUAGES RUNNER
w: 130 cm x l: 195.1 cm

5595



Approx. 100 cm

Approx. 100 cm



RF5595823 NUAGES
w: 195.1 cm x l: 195.1 cm

5595



Approx. 100 cm

400 cm

Approx. 100 cm



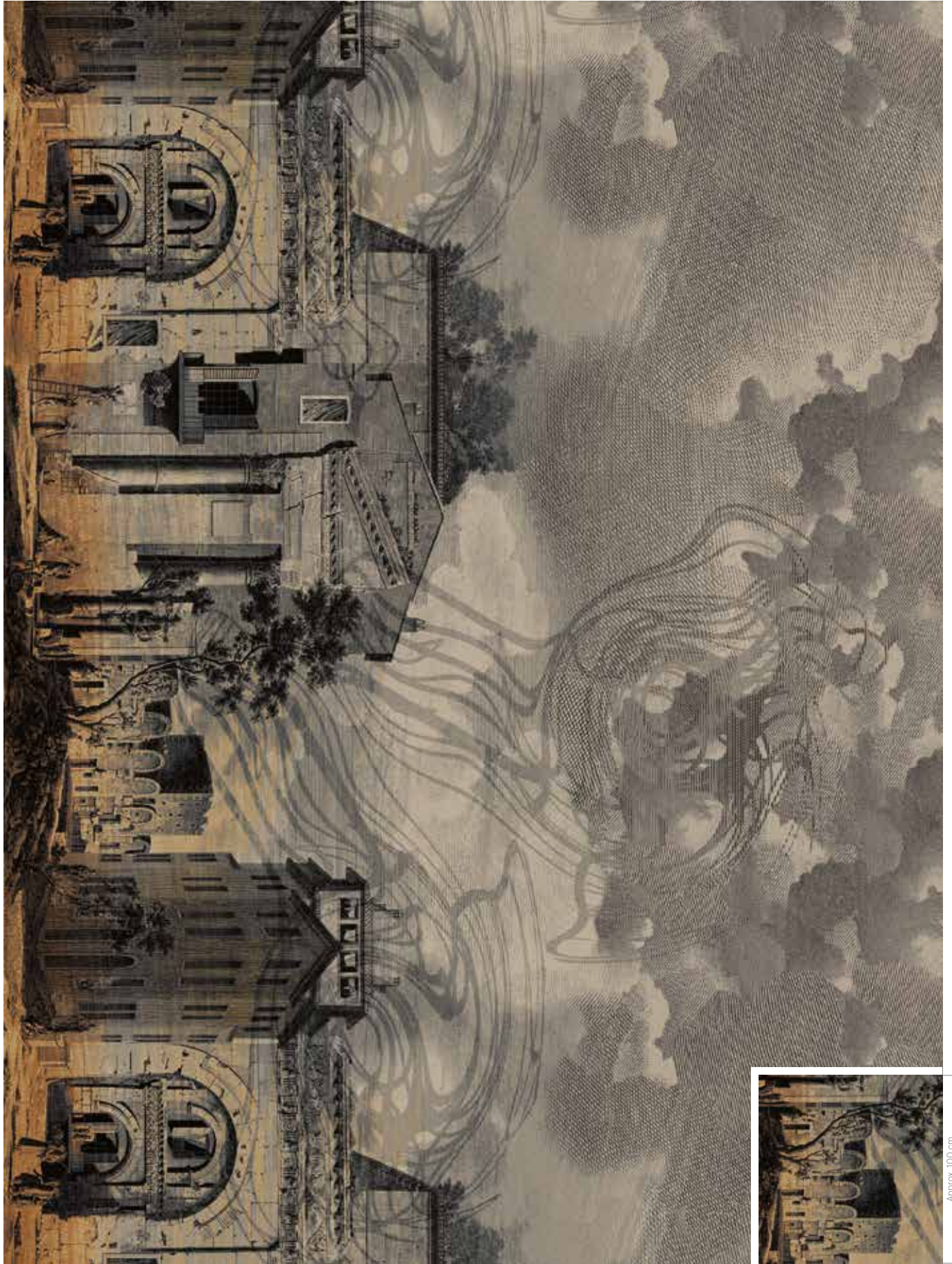


RF5595824 FORUM - ROOM LEFT
RF5595825 FORUM - ROOM RIGHT

w: 400 cm x l: 390.1 cm
w: 400 cm x l: 390.1 cm

Background RF5595823
Background RF5595823

5595
5595



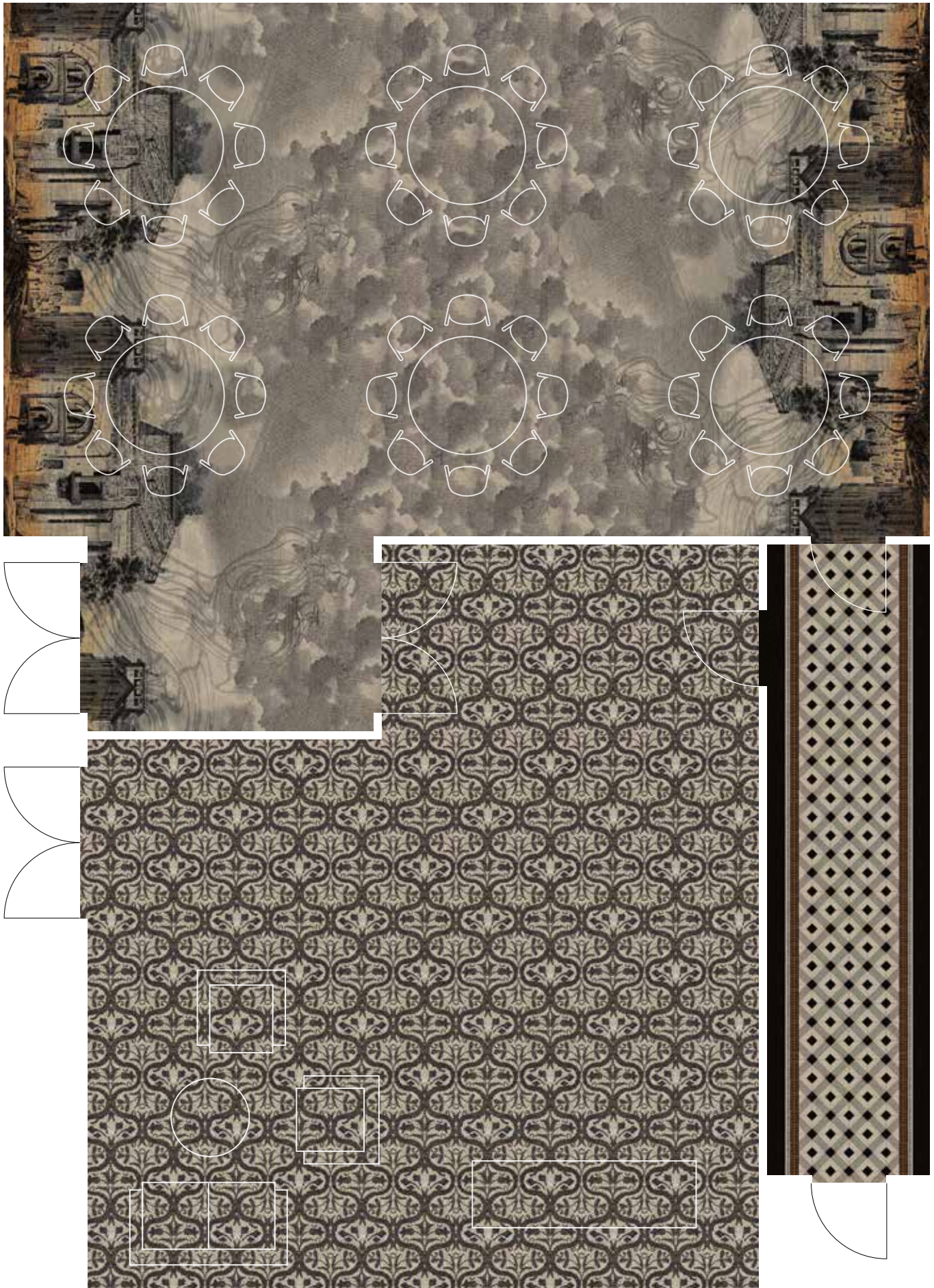
400 cm

Approx. 100 cm

Approx. 100 cm



FLOORSCAPE INSPIRATION








COLLECTION OVERVIEW















textile

<p>PERSE</p>  <p>RF5575800 Page 16</p>	<p>TOILE</p>  <p>RF5575803 Page 17</p>	<p>PERSE CORRIDOR</p>  <p>RF5575802 Page 17</p>	<p>PERSE RUNNER</p>  <p>RF5575801 Page 17</p>	<p>CACHEMIRE</p>  <p>RF5575804 Page 18</p>	<p>VELOURS</p>  <p>RF5500700 Page 20</p>	<p>INDIENNE</p>  <p>RL: RF5595802 RR: RF5595803 Page 23</p>	<p>TOILE</p>  <p>RF5595801 Page 22</p>	
<p>RUBAN</p>  <p>RF5595800 Page 22</p>	<p>SARI</p>  <p>RF5520800 Page 24</p>	<p>TOILE</p>  <p>RF5520801 Page 24</p>						

mineral

<p>CALADES</p>  <p>RF5595804 Page 30</p>	<p>CALADES II</p>  <p>RF5595805 Page 30</p>	<p>CALADES CORRIDOR</p>  <p>RF5595807 Page 31</p>	<p>CALADES RUNNER</p>  <p>RF5595806 Page 31</p>	<p>CHAUSSÉE</p>  <p>RF5595808 Page 31</p>	<p>CARREAUX</p>  <p>RF5595814 Page 33</p>	<p>CARREAUX CORRIDOR</p>  <p>RF5595812 Page 33</p>	<p>CARREAUX RUNNER</p>  <p>RF5595809 Page 33</p>
<p>ROCHES</p>  <p>RF5595815 Page 34</p>							

gravure

<p>PAPILLONS</p>  <p>RL: RF5575805 RR: RF5575806 Page 40</p>	<p>NUAGES</p>  <p>RF5575807 Page 41</p>	<p>PAPILLONS</p>  <p>RL: RF5575808 RR: RF5575809 Page 42</p>	<p>NUAGES</p>  <p>RF5575810 Page 43</p>	<p>PAPILLONS</p>  <p>RL: RF5575811 RR: RF5575812 Page 42</p>	<p>NUAGES</p>  <p>RF5575813 Page 43</p>	<p>PAPILLONS</p>  <p>RL: RF5595826 RR: RF5595816 Page 42</p>	<p>NUAGES</p>  <p>RF5595817 Page 43</p>
<p>PANORAMA</p>  <p>RL: RF5595818 RR: RF5595819 Page 48</p>	<p>NUAGES</p>  <p>RF5595820 Page 49</p>	<p>FORUM</p>  <p>RL: RF5595824 RR: RF5595825 Page 52</p>	<p>NUAGES</p>  <p>RF5595823 Page 50</p>	<p>NUAGES CORRIDOR</p>  <p>RF5595821 Page 50</p>	<p>NUAGES RUNNER</p>  <p>RF5595822 Page 50</p>		

RL = ROOM LEFT
RR = ROOM RIGHT



1

2

5

6

7



3

4

STANDARD COLOUR PALETTES

All designs are developed in one of four standard colour palettes as shown below. Each palette has 12 solid base colours (BC1-12) and 65 accent colours (AC13-77).

5500 BASE COLOUR PALETTE

BC1	BC2	BC3	BC4
BC5	BC6	BC7	BC8
BC9	BC10	BC11	BC12

5500 ACCENT COLOURS for use in areas of max. 50 x 50 cm

AC13	AC14	AC15	AC16	AC17	AC48	AC49	AC50	AC51	AC52
AC18	AC19	AC20	AC21	AC22	AC53	AC54	AC55	AC56	AC57
AC23	AC24	AC25	AC26	AC27	AC58	AC59	AC60	AC61	AC62
AC28	AC29	AC30	AC31	AC32	AC63	AC64	AC65	AC66	AC67
AC33	AC34	AC35	AC36	AC37	AC68	AC69	AC70	AC71	AC72
AC38	AC39	AC40	AC41	AC42	AC73	AC74	AC75	AC76	AC77
AC43	AC44	AC45	AC46	AC47					

5520 BASE COLOUR PALETTE

BC1	BC2	BC3	BC4
BC5	BC6	BC7	BC8
BC9	BC10	BC11	BC12

5520 ACCENT COLOURS for use in areas of max. 50 x 50 cm

AC13	AC14	AC15	AC16	AC17	AC48	AC49	AC50	AC51	AC52
AC18	AC19	AC20	AC21	AC22	AC53	AC54	AC55	AC56	AC57
AC23	AC24	AC25	AC26	AC27	AC58	AC59	AC60	AC61	AC62
AC28	AC29	AC30	AC31	AC32	AC63	AC64	AC65	AC66	AC67
AC33	AC34	AC35	AC36	AC37	AC68	AC69	AC70	AC71	AC72
AC38	AC39	AC40	AC41	AC42	AC73	AC74	AC75	AC76	AC77
AC43	AC44	AC45	AC46	AC47					

5575 BASE COLOUR PALETTE

BC1	BC2	BC3	BC4
BC5	BC6	BC7	BC8
BC9	BC10	BC11	BC12

5575 ACCENT COLOURS for use in areas of max. 50 x 50 cm

AC13	AC14	AC15	AC16	AC17	AC48	AC49	AC50	AC51	AC52
AC18	AC19	AC20	AC21	AC22	AC53	AC54	AC55	AC56	AC57
AC23	AC24	AC25	AC26	AC27	AC58	AC59	AC60	AC61	AC62
AC28	AC29	AC30	AC31	AC32	AC63	AC64	AC65	AC66	AC67
AC33	AC34	AC35	AC36	AC37	AC68	AC69	AC70	AC71	AC72
AC38	AC39	AC40	AC41	AC42	AC73	AC74	AC75	AC76	AC77
AC43	AC44	AC45	AC46	AC47					

5595 BASE COLOUR PALETTE

BC1	BC2	BC3	BC4
BC5	BC6	BC7	BC8
BC9	BC10	BC11	BC12

5595 ACCENT COLOURS for use in areas of max. 50 x 50 cm

AC13	AC14	AC15	AC16	AC17	AC48	AC49	AC50	AC51	AC52
AC18	AC19	AC20	AC21	AC22	AC53	AC54	AC55	AC56	AC57
AC23	AC24	AC25	AC26	AC27	AC58	AC59	AC60	AC61	AC62
AC28	AC29	AC30	AC31	AC32	AC63	AC64	AC65	AC66	AC67
AC33	AC34	AC35	AC36	AC37	AC68	AC69	AC70	AC71	AC72
AC38	AC39	AC40	AC41	AC42	AC73	AC74	AC75	AC76	AC77
AC43	AC44	AC45	AC46	AC47					

RECOLOUR STEPS

Try our recolour tool at egecarpets.com

SELECT DESIGN

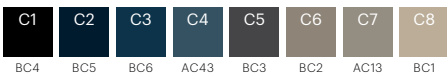
RF5595800



CHANGE COLOUR OF BACKGROUND

Choose between BC1-12 and in areas of max. 50 x 50 cm also choose accent colours

EF42972-327



CHANGE PATTERN COLOUR

Choose between BC1-12 and accent colours from the same colour palette as used for background

EF42972-328







FOLLOW THE GREEN THREAD

Cradle to Cradle

All our carpets are Cradle to Cradle Certified®. The idea behind Cradle to Cradle is that the Earth's finite resources shouldn't go to waste. They should be re-used in new contexts, with no detrimental effect on people or the environment. In other words, the goal is to eliminate waste.

Indoor Air Comfort Gold

All our carpets are Indoor Air Comfort Gold certified, showing compliance of product emissions with the criteria of many of the voluntary specifications issued by the most relevant ecolabels and similar specifications in the EU. Gold certified products are best-in-class for low emissions and good for indoor air quality.

EcoVadis

Our sustainability excellence has been recognised by EcoVadis with the highest score in its class. EcoVadis is the world's leading sustainability rating agency, and they rank the CSR performance of 75,000 companies in 160 countries. The Platinum ranking puts us in the top 1% recognising Ege Carpets as one of the most advanced companies in terms of CSR practices.

The Green Thread

A green thread runs through everything we do. It has for decades and will continue into the future. We do our utmost to protect the environment and improve the wellbeing of people. Read more about The Green Thread at egecarpets.com.

Terms and conditions

The Atelier collection features three design themes with various patterns in broadloom. Available in all our Highline qualities and with some of the patterns developed specifically for corridors and runners, the collection is perfect for use in almost any interior design project.

- 16 unique designs
- Recolour options (see page 59)
- 9 standard qualities to choose from (see specifications at egecarpets.com)
- No minimum order
- Undisputed performance standard EN 1307
- Performance classification to fit any need; extra heavy use
- 24-hour sample service and eco-friendly shipping option of 5-7 days (within Europe only)
- Dispatch within 2 weeks from receipt of order



THE GREEN THREAD





Monsieur Christian Lacroix. Born in Arles on 16 May 1951. After studying classical literature and art history in Montpellier, then at the Sorbonne and the Ecole du Louvre, he migrated towards costume design and created his own fashion house in 1987. Since the 1980s, he has put his signature to the costumes and scenography of numerous theatrical, opera and ballet productions. Since 2000, he has also been involved with more industrial design projects: TGV trains, hotels and cinemas.

CUSTOM DESIGN BY MONSIEUR CHRISTIAN LACROIX

Historical inspirations, vintage and elegant interpretations are at the heart of the work of Monsieur Christian Lacroix. In recent years, he has concentrated on interior design, artistic direction and scenography for theater. He has completed interior design work at several landmark hotels and museums and worked with Ege Carpets on many projects such as Palais Galliera, Hôtel du Petit Moulin, Hôtel l'Antoine and Hôtel Notre Dame in Paris as well as Musée Réattu and Hôtel Jules César in Arles.

If you would like to have your very own carpet designed by Monsieur Christian Lacroix, please contact us for further information.

Top left: Musée Réattu, Arles, France

Top right: Hôtel Jules César, Arles, France

Bottom: Hôtel Notre Dame, Paris, France





Top left: Monsieur Christian Lacroix

Bottom left and right: Palais Galliera, Paris, France



BY APPOINTMENT TO THE ROYAL DANISH COURT

Ege Carpets A/S

THANKS

Monsieur Christian Lacroix, Designer XCLX · Jean Philippe Pons, XCLX · Dimitri Hadjiyannakis, Graphic Designer XCLX · Karen Nybo, Designer Ege Carpets · Susanne Lykke, Visual Communication Manager Ege Carpets · Gitte Uhre Karlskov, Graphic Designer Ege Carpets · Mikkel Mortensen, Photographer Yellows · Lene Ronfeldt, Interior Stylist · Daniel Rouvier, Conservator Musée Réattu · Andy Neyrotti, Attaché of Conservation Musée Réattu · Aldo Bastie, Director Château de Tarascon · Olivier Saillard, Director Palais Galliera

ege[®]

egecarpets.com